



CATALOGUE NO. 8635.1  
EMBARGOED UNTIL 11.30 A.M. 25 MARCH 1994

**TOURIST ACCOMMODATION, NEW SOUTH WALES  
DECEMBER QUARTER 1993**

\*\*\*\*\*

**MAIN FEATURES**

DECEMBER QUARTER 1993  
COMPARED WITH  
DECEMBER QUARTER 1992

**HOTELS, MOTELS AND GUEST HOUSES**

- Rooms available decreased by 0.9 per cent from 57,445 to 56,901 while bed spaces increased slightly from 164,523 to 164,763.
- Room nights occupied increased by 8.1 per cent from 2,657,277 to 2,871,767 overall, ranging from the largest increases of 13.7 per cent for Sydney Statistical Division and 10.7 per cent for the combined North Western and Far West Statistical Divisions through to a decrease for Murray Statistical Division of 3.2 per cent.
- The room occupancy rate overall rose from 50.7 per cent to 55.1 per cent, with Sydney Statistical Division recording an 8.6 percentage point increase to 63.4 per cent.
- Guest nights increased by 7.9 per cent from 4,745,359 to 5,122,574 and the bed occupancy rate increased from 31.6 per cent to 34.0 per cent.
- Guest arrivals increased by 6.3 per cent from 2,594,154 to 2,757,194 and the average length of stay increased slightly to 1.9 days overall, ranging from 2.6 days for star grade 5 establishments to 1.6 days for star grade 2 establishments.
- Takings from accommodation increased by 9.4 per cent from \$222.7m to \$243.6m and average takings per room night occupied increased from \$84 to \$85.

**HOLIDAY FLATS, UNITS AND HOUSES**

- The number of units, etc. available for short-term letting increased by 2.0 per cent to 10,440 while unit nights occupied decreased by 0.4 per cent from 394,349 to 392,784.
- The unit occupancy rate consequently decreased from 41.9 per cent to 41.0 per cent.
- Unit lettings increased by 7.4 per cent from 65,852 to 70,747 but the average length of stay decreased from 6.0 days to 5.6 days.
- Accommodation takings increased by 4.0 per cent from \$22.5m to \$23.5m and the average takings per unit night occupied increased by 4.4 per cent from \$57 to \$60.

**CARAVAN PARKS**

- Caravan park capacity available decreased slightly from 96,126 to 96,002 powered and unpowered sites and cabins, etc.
- Site nights occupied increased by 2.4 per cent from 4,476,465 to 4,585,060 and the site occupancy rate rose by 1.3 percentage points to 52.4 per cent.
- Takings from accommodation rose by 3.6 per cent from \$42.6m to \$44.1m.

**VISITOR HOSTELS**

- Bed spaces available decreased by 2.2 per cent from 5,137 to 5,026 and guest nights decreased by 1.3 per cent from 262,067 to 258,747.
- The bed occupancy rate increased by one percentage point to 56.5 per cent.
- Accommodation takings increased by 6.5 per cent from \$3.2m to \$3.4m at an average tariff of \$13 per guest night.

\*\*\*\*\*

**NOTE**

From December quarter 1993, hotel, motel and guest house establishments with fewer than five rooms have been formally excluded from the scope of this statistical collection. This change in scope resulted in the exclusion of 20 establishments which in the September quarter 1993 Survey aggregates for New South Wales represented 1.1 per cent of hotel, motel and guest house establishments but accounted for only 0.1 per cent of accommodation capacity, occupancy and takings.

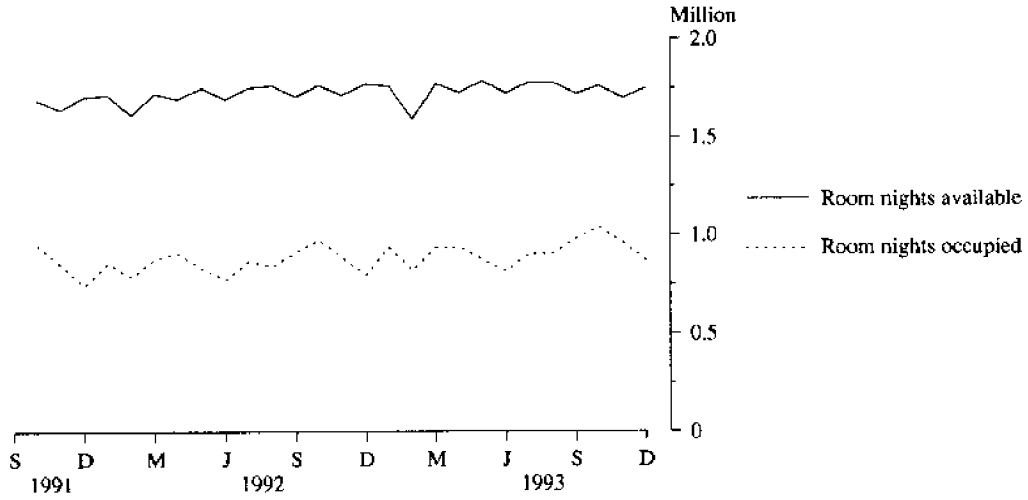
\*\*\*\*\*

**INQUIRIES**

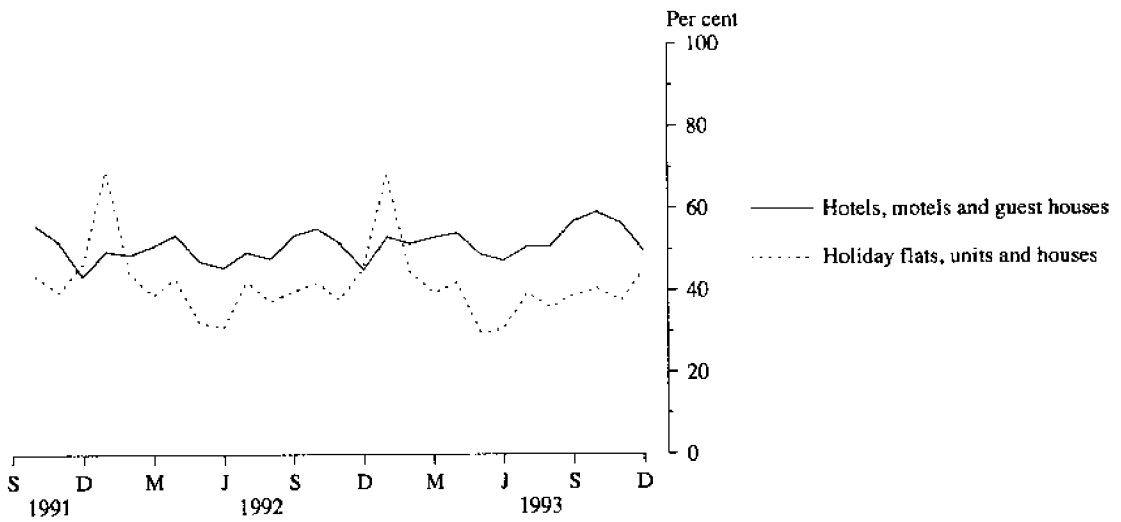
- *for further information about statistics in this publication and the availability of related unpublished statistics, contact Jillian Johnson on 008 077327 or any ABS office.*
- *for information about other ABS statistics and services, refer to the back page of this publication.*

\*\*\*\*\*

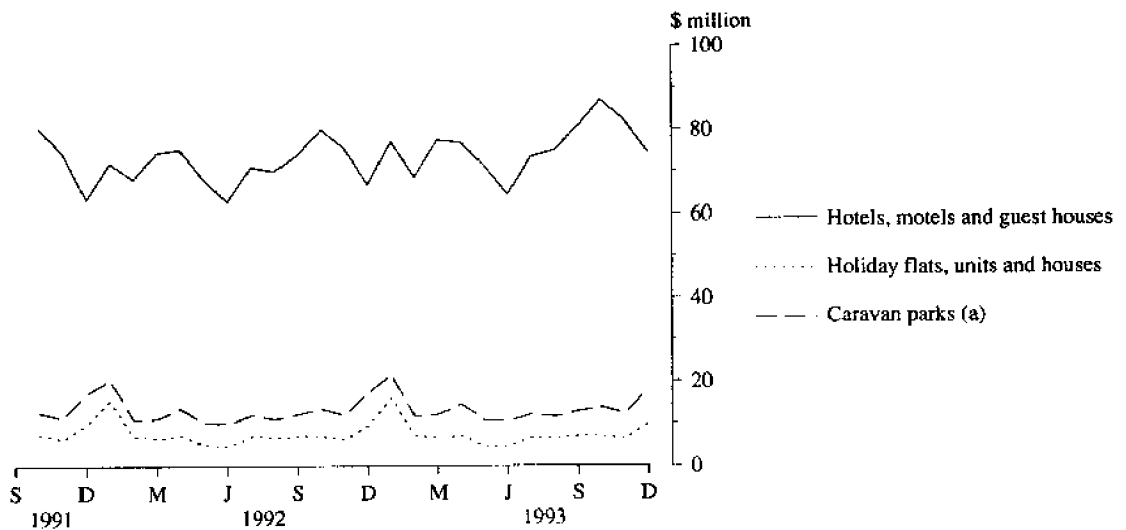
**MONTHLY ROOM NIGHTS AVAILABLE AND OCCUPIED:  
HOTELS, MOTELS AND GUEST HOUSES,  
NEW SOUTH WALES**



**MONTHLY OCCUPANCY RATES,  
NEW SOUTH WALES**



**MONTHLY TAKINGS FROM ACCOMMODATION,  
NEW SOUTH WALES**



(a) Includes ACT establishments before March quarter 1993.

## CONTENTS

<i>Table</i>	<i>Page</i>
" Main features	1
" Diagrams	2
1 Summary of hotels, motels and guest houses with facilities, New South Wales	4
2 Summary of caravan parks, New South Wales	5
3 Summary of holiday flats, units and houses, New South Wales	6
4 Summary of visitor hostels, New South Wales	6
5 Hotels, motels and guest houses with facilities by establishment size, New South Wales	7
6 Hotels, motels and guest houses with facilities by star grading, Sydney Statistical Division and New South Wales	8
7 Hotels, motels and guest houses with facilities by statistical division, New South Wales	10
8 Hotels, motels and guest houses with facilities: Statistical divisions and selected statistical local areas, New South Wales	14
9 Holiday flats, units and houses by statistical division, New South Wales	20
10 Holiday flats, units and houses: Selected statistical divisions and statistical local areas, New South Wales	22
11 Caravan parks: Statistical divisions and selected statistical local areas, New South Wales	24
12 Caravan parks by statistical division, New South Wales	28
13 Visitor hostels by statistical division, New South Wales	31
" Explanatory Notes	32
" Reference map - statistical divisions of New South Wales	35

TABLE 1 — SUMMARY OF HOTELS, MOTELS AND GUEST HOUSES WITH FACILITIES, NEW SOUTH WALES (a)

Particulars	Unit	Quarter ended				Year ended			
		September 1992	December 1992	March 1993	June 1993	September 1993	December 1993	December 1992	December 1993
<b>LICENSED HOTELS WITH FACILITIES</b>									
Establishments	No.	278	277	279	284	281	267	..	..
Guest rooms	No.	17,883	17,770	18,016	18,827	18,727	18,512	..	..
Bed spaces	No.	44,832	44,689	45,351	47,362	47,271	46,916	..	..
Employment (persons)	No.	15,402	15,034	15,287	15,787	15,951	16,038	..	..
Room nights occupied	'000	812.2	864.6	880.1	879.8	929.4	1,025.8	3,221.4	3,715.2
Room occupancy rate	per cent	50.1	53.1	55.4	51.4	53.9	60.7	50.7	55.3
Guest nights	'000	1,345.5	1,398.5	1,411.7	1,390.8	1,510.0	1,683.4	5,195.9	5,996.0
Bed occupancy rate	per cent	33.0	34.1	35.4	32.3	34.7	39.7	32.3	35.5
Guest arrivals	'000	617.0	653.5	619.2	607.2	722.0	791.0	2,395.0	2,739.4
Average length of stay	days	2.2	2.1	2.3	2.3	2.1	2.1	2.2	2.2
Takings from accommodation	\$'000	87,848	98,071	94,502	93,402	99,782	113,482	362,767	401,168
<b>MOTELS AND GUEST HOUSES WITH FACILITIES</b>									
Establishments	No.	1,465	1,461	1,455	1,479	1,475	1,459	..	..
Guest rooms	No.	39,163	39,675	39,221	38,759	38,630	38,389	..	..
Bed spaces	No.	119,336	119,834	118,743	118,356	118,298	117,847	..	..
Employment (persons)	No.	14,651	15,018	15,031	14,258	14,590	14,528	..	..
Room nights occupied	'000	1,808.1	1,792.7	1,807.7	1,744.3	1,855.3	1,846.0	7,084.4	7,253.3
Room occupancy rate	per cent	50.3	49.6	51.3	49.5	52.2	52.4	49.6	51.4
Guest nights	'000	3,368.3	3,346.9	3,448.0	3,162.3	3,427.6	3,439.1	13,182.2	13,477.0
Bed occupancy rate	per cent	30.7	30.6	32.3	29.4	31.5	31.8	30.3	31.3
Guest arrivals	'000	1,996.7	1,940.7	1,921.0	1,849.4	2,006.4	1,966.2	7,588.9	7,743.0
Average length of stay	days	1.7	1.7	1.8	1.7	1.7	1.7	1.7	1.7
Takings from accommodation	\$'000	127,176	124,615	129,003	119,596	129,672	130,079	495,858	508,349
<b>TOTAL HOTELS, MOTELS AND GUEST HOUSES WITH FACILITIES</b>									
Establishments	No.	1,743	1,738	1,734	1,763	1,756	1,726	..	..
Guest rooms	No.	57,046	57,445	57,237	57,586	57,357	56,901	..	..
Bed spaces	No.	164,168	164,523	164,094	165,718	165,569	164,763	..	..
Employment (persons)	No.	30,053	30,052	30,318	30,045	30,541	30,566	..	..
Room nights occupied	'000	2,620.3	2,657.3	2,687.8	2,624.1	2,784.7	2,871.8	10,305.9	10,968.5
Room occupancy rate	per cent	50.2	50.7	52.5	50.2	52.8	55.1	49.9	52.6
Guest nights	'000	4,713.8	4,745.4	4,859.7	4,553.1	4,937.6	5,122.6	18,378.1	19,473.0
Bed occupancy rate	per cent	31.3	31.6	33.1	30.2	32.4	34.0	30.9	32.5
Guest arrivals	'000	2,613.6	2,594.2	2,540.2	2,456.6	2,728.4	2,757.2	9,983.9	10,482.4
Average length of stay	days	1.8	1.8	1.9	1.9	1.8	1.9	1.8	1.9
Takings from accommodation	\$'000	215,024	222,686	223,504	212,998	229,454	243,561	858,625	909,518

(a) From December quarter 1993, establishments with fewer than 5 rooms have been formally excluded from the scope of this collection. See Explanatory Note 2 (page 32).

TABLE 2 — SUMMARY OF CARAVAN PARKS, NEW SOUTH WALES

Particulars	Unit	Quarter ended				Year ended			
		September 1992	December 1992	March 1993	June 1993	September 1993	December 1993	December 1992	December 1993
<b>SHORT-TERM CARAVAN PARKS (a)</b>									
Establishments	No.	414	412	410	410	471	471	..	..
Capacity									
On-site vans	No.	3,167	3,097	2,909	2,891	3,249	3,285	..	..
Other powered sites	No.	36,640	36,733	36,845	36,768	42,864	42,805	..	..
Unpowered sites	No.	14,575	14,537	14,550	14,526	15,883	16,010	..	..
Cabins, etc.	No.	2,421	2,541	2,585	2,649	2,849	2,835	..	..
<i>Total capacity</i>	<i>No.</i>	<i>56,803</i>	<i>56,908</i>	<i>56,889</i>	<i>56,834</i>	<i>64,845</i>	<i>64,935</i>	..	..
Sites occupied by long-term guests	No.	2,196	2,162	2,195	2,227	3,548	3,504	..	..
Other sites permanently reserved (b)	No.	18,019	17,977	18,588	18,564	21,766	21,902	..	..
Employment (persons)	No.	1,551	1,677	1,645	1,626	1,788	1,891	..	..
Site nights occupied (b)	'000	2,396.1	2,536.3	2,734.6	2,449.6	2,913.0	3,089.1	(b)	11,186.3
Site occupancy rate (b)	per cent	45.9	49.0	53.5	47.4	48.8	52.4	(b)	50.5
Takings from accommodation	\$'000	17,774	23,777	26,274	18,693	21,210	27,967	84,284	94,144
<b>LONG-TERM CARAVAN PARKS (a)</b>									
Establishments	No.	388	390	384	383	326	327	..	..
Capacity									
On-site vans	No.	3,832	3,939	3,868	3,852	3,557	3,621	..	..
Other powered sites	No.	26,613	26,792	26,163	26,160	20,654	20,599	..	..
Unpowered sites	No.	6,554	6,562	6,173	6,089	4,818	4,986	..	..
Cabins, etc.	No.	1,876	1,925	1,956	1,944	1,810	1,861	..	..
<i>Total capacity</i>	<i>No.</i>	<i>38,875</i>	<i>39,218</i>	<i>38,160</i>	<i>38,045</i>	<i>30,839</i>	<i>31,067</i>	..	..
Sites occupied by long-term guests	No.	14,176	14,110	13,639	13,564	12,128	12,309	..	..
Other sites permanently reserved (b)	No.	3,941	3,957	3,956	3,828	984	1,257	..	..
Employment (persons)	No.	1,383	1,383	1,348	1,350	1,189	1,227	..	..
Site nights occupied (b)	'000	1,897.7	1,940.2	1,927.9	1,833.4	1,437.5	1,496.0	(b)	6,694.8
Site occupancy rate (b)	per cent	53.1	53.9	56.2	53.0	50.7	52.5	(b)	53.2
Takings from accommodation	\$'000	17,242	18,804	19,030	17,291	15,377	16,162	69,144	67,859
<b>TOTAL CARAVAN PARKS</b>									
Establishments	No.	802	802	794	793	797	798	..	..
Capacity									
On-site vans	No.	6,999	7,036	6,777	6,743	6,806	6,906	..	..
Other powered sites	No.	63,253	63,525	63,008	62,928	63,518	63,404	..	..
Unpowered sites	No.	21,129	21,099	20,723	20,615	20,701	20,996	..	..
Cabins, etc.	No.	4,297	4,466	4,541	4,593	4,659	4,696	..	..
<i>Total capacity</i>	<i>No.</i>	<i>95,678</i>	<i>96,126</i>	<i>95,049</i>	<i>94,879</i>	<i>95,684</i>	<i>96,002</i>	..	..
Sites occupied by long-term guests	No.	16,372	16,272	15,834	15,791	15,676	15,813	..	..
Other sites permanently reserved (b)	No.	21,960	21,934	22,544	22,392	22,750	23,159	..	..
Employment (persons)	No.	2,934	3,060	2,993	2,976	2,977	3,118	..	..
Site nights occupied (b)	'000	4,293.9	4,476.5	4,662.5	4,283.0	4,350.4	4,585.1	(b)	17,881.0
Site occupancy rate (b)	per cent	48.8	51.1	54.6	49.6	49.4	52.4	(b)	51.5
Takings from accommodation	\$'000	35,015	42,580	45,304	35,984	36,586	44,129	153,428	162,003

(a) A review of the occupancy of individual caravan parks resulted in reclassification in September quarter 1993 of a net 57 caravan parks from predominantly long-term to predominantly short-term. (b) From September quarter 1992, caravan park sites, etc. permanently reserved but only casually occupied by their tenants have been recorded continuously as site nights occupied irrespective of whether the tenants of individual sites were in residence on any particular night. See Explanatory Notes 11 and 14. Occupancy measures from September quarter 1992 are therefore not comparable with those from previous quarters.

TABLE 3 — SUMMARY OF HOLIDAY FLATS, UNITS AND HOUSES, NEW SOUTH WALES

Particulars	Unit	Quarter ended				Year ended			
		September 1992	December 1992	March 1993	June 1993	September 1993	December 1993	December 1992	December 1993
Letting entities	No.	406	407	418	409	412	409	..	..
Flats, units and houses									
Single bedroom	No.	1,995	1,970	1,971	1,937	1,940	1,983	..	..
Multiple bedroom	No.	7,879	8,267	8,537	8,222	8,385	8,457	..	..
Total flats, units and houses	No.	9,874	10,237	10,508	10,159	10,325	10,440	..	..
Bed spaces	No.	45,650	46,994	48,492	47,378	47,895	48,817	..	..
Employment (persons)(a)	No.	1,104	1,101	1,093	1,082	1,087	1,105	..	..
Unit nights occupied	'000	362.5	394.3	480.7	316.0	362.4	392.8	1,555.3	1,551.9
Unit occupancy rate	per cent	39.9	41.9	51.0	34.2	38.2	41.0	42.2	41.1
Unit lettings	'000	60.7	65.9	74.5	57.3	62.1	70.7	258.6	264.6
Average length of stay	days	6.0	6.0	6.5	5.5	5.8	5.6	6.0	5.9
Takings from accommodation	\$'000	20,724	22,541	29,679	16,451	20,227	23,450	88,752	89,806

(a) Employment numbers exclude real estate agents and their employees.

TABLE 4 — SUMMARY OF VISITOR HOSTELS, NEW SOUTH WALES

Particulars	Unit	Quarter ended				Year ended			
		September 1992	December 1992	March 1993	June 1993	September 1993	December 1993	December 1992	December 1993
Establishments	No.	78	77	77	76	74	78	..	..
Bed spaces	No.	5,020	5,137	5,109	4,917	4,825	5,026	..	..
Employment (persons)	No.	284	277	288	277	275	300	..	..
Guest nights	'000	205.6	262.1	265.3	196.7	205.4	258.7	971.7	926.1
Bed occupancy rate	per cent	45.1	55.5	58.3	44.1	46.3	56.5	51.5	51.3
Guest arrivals	'000	61.3	71.6	75.9	60.6	60.1	73.3	289.1	270.0
Average length of stay	days	3.4	3.7	3.5	3.2	3.4	3.5	3.4	3.4
Takings from accommodation	\$'000	2,371	3,197	3,274	2,525	2,514	3,406	11,479	11,718

**TABLE 5 — HOTELS, MOTELS AND GUEST HOUSES WITH FACILITIES BY ESTABLISHMENT SIZE, NEW SOUTH WALES (a)**

Particulars	Establishment size (No. of rooms)						New South Wales
	1-9 (a)	10-15	16-25	26-50	51-100	101+	
<b>ESTABLISHMENTS, CAPACITY AND EMPLOYMENT</b>							
<i>December quarter 1992—</i>							
Establishments	181	421	522	428	107	79	1,738
Guest rooms	1,234	5,116	10,493	15,003	7,364	18,235	57,445
Bed spaces	3,774	15,623	31,671	45,927	22,018	45,510	164,523
Employment (persons)	1,120	2,423	3,318	5,916	3,657	13,618	30,052
<i>December quarter 1993—</i>							
Establishments	173	424	522	423	109	75	1,726
Guest rooms	1,257	5,168	10,512	14,744	7,401	17,819	56,901
Bed spaces	3,853	15,878	31,810	45,467	22,141	45,614	164,763
Employment (persons)	1,187	2,445	3,353	6,017	3,942	13,622	30,566
<b>ROOM NIGHTS OCCUPIED ('000)</b>							
<i>December quarter 1992</i>	43.2	219.8	456.3	629.7	361.0	947.2	2,657.3
<i>1993—</i>							
October	15.8	82.4	177.2	249.2	137.7	381.9	1,044.2
November	12.9	68.9	147.1	209.0	126.9	392.6	957.5
December	13.4	68.9	138.6	191.1	118.8	339.2	870.1
<i>December quarter 1993</i>	42.1	220.3	462.9	649.3	383.4	1,113.7	2,871.8
<b>ROOM OCCUPANCY RATES (per cent)</b>							
<i>December quarter 1992</i>	38.1	46.8	47.3	45.6	53.7	57.6	50.7
<i>1993—</i>							
October	41.1	51.5	54.4	54.5	60.0	69.1	59.2
November	34.6	44.5	46.9	47.3	57.7	74.5	56.5
December	34.9	43.1	42.7	41.9	51.8	62.1	49.6
<i>December quarter 1993</i>	36.9	46.4	48.0	47.9	56.5	68.5	55.1
<b>GUEST NIGHTS ('000)</b>							
<i>December quarter 1992</i>	83.2	416.0	877.3	1,151.2	663.5	1,554.2	4,745.4
<i>1993—</i>							
October	31.7	155.9	340.3	451.3	256.7	640.0	1,876.0
November	24.6	121.2	261.6	350.4	224.1	641.9	1,624.0
December	26.8	135.4	272.3	361.4	233.8	593.0	1,622.6
<i>December quarter 1993</i>	83.2	412.4	874.2	1,163.1	714.7	1,874.9	5,122.6
<b>BED OCCUPANCY RATES (per cent)</b>							
<i>December quarter 1992</i>	24.0	29.0	30.1	27.2	33.0	37.8	31.6
<i>1993—</i>							
October	26.8	31.7	34.6	32.0	37.4	45.3	36.7
November	21.5	25.4	27.6	25.7	33.9	48.5	33.2
December	22.6	27.6	27.7	25.7	34.1	43.0	32.1
<i>December quarter 1993</i>	23.7	28.3	30.0	27.8	35.1	45.6	34.0
<b>GUEST ARRIVALS ('000)</b>							
<i>December quarter 1992</i>	50.1	276.6	578.4	709.8	282.5	696.7	2,594.2
<i>1993—</i>							
October	19.0	104.9	221.7	273.9	117.5	279.1	1,016.2
November	14.3	81.4	170.9	215.1	102.4	280.1	864.1
December	15.5	89.5	181.8	221.5	104.8	263.8	876.9
<i>December quarter 1993</i>	48.7	275.8	574.4	710.6	324.7	823.0	2,757.2
<b>AVERAGE LENGTH OF STAY (days)</b>							
<i>December quarter 1992</i>	1.7	1.5	1.5	1.6	2.3	2.2	1.8
<i>December quarter 1993</i>	1.7	1.5	1.5	1.6	2.2	2.3	1.9
<b>TAKINGS FROM ACCOMMODATION (\$'000)</b>							
<i>December quarter 1992</i>	2,276	10,828	24,662	41,562	29,329	114,029	222,686
<i>1993—</i>							
October	868	4,098	9,679	16,215	11,538	44,721	87,119
November	688	3,322	7,882	13,424	10,690	46,062	82,068
December	800	3,566	7,891	12,968	10,439	38,710	74,374
<i>December quarter 1993</i>	2,355	10,986	25,452	42,606	32,667	129,494	243,561

(a) From December quarter 1993, establishments with fewer than 5 rooms have been formally excluded from the scope of this collection. See Explanatory Note 2 (page 32).

TABLE 6 — HOTELS, MOTELS AND GUEST HOUSES WITH FACILITIES BY STAR GRADING,  
SYDNEY STATISTICAL DIVISION AND NEW SOUTH WALES (a)

Particulars	Sydney Statistical Division				
	Star grading				Total
	1 and 2	3	4 and 5	Ungraded	
ESTABLISHMENTS, CAPACITY AND EMPLOYMENT					
<i>December quarter 1992—</i>					
Establishments	96	141	71	45	353
Guest rooms	3,164	7,095	13,916	2,197	26,372
Bed spaces	8,341	19,636	34,187	5,048	67,212
Employment (persons)	1,533	3,002	11,174	1,791	17,500
<i>December quarter 1993—</i>					
Establishments	78	139	73	48	338
Guest rooms	1,918	7,063	14,305	2,217	25,503
Bed spaces	5,302	19,823	35,556	5,422	66,103
Employment (persons)	1,278	3,152	11,656	1,726	17,812
ROOM NIGHTS OCCUPIED ('000)					
<i>December quarter 1992</i>	136.1	341.0	762.2	68.3	1,307.6
<i>1993—</i>					
October	31.6	142.4	304.7	34.9	513.6
November	29.9	132.4	318.1	36.7	517.1
December	28.4	120.5	276.7	30.3	455.9
<i>December quarter 1993</i>	89.8	395.3	899.5	101.9	1,486.5
ROOM OCCUPANCY RATES (per cent)					
<i>December quarter 1992</i>	47.1	52.6	59.8	39.2	54.8
<i>1993—</i>					
October	53.1	65.0	68.7	51.0	65.0
November	52.0	63.0	74.1	55.4	67.8
December	47.7	55.0	62.4	44.3	57.7
<i>December quarter 1993</i>	50.9	61.0	68.3	50.2	63.4
GUEST NIGHTS ('000)					
<i>December quarter 1992</i>	239.2	607.8	1,245.3	98.5	2,190.7
<i>1993—</i>					
October	56.8	255.7	508.5	54.9	875.8
November	52.2	230.6	520.8	56.8	860.4
December	52.3	225.6	481.4	48.1	807.3
<i>December quarter 1993</i>	161.3	711.9	1,510.7	159.7	2,543.6
BED OCCUPANCY RATES (per cent)					
<i>December quarter 1992</i>	31.4	34.0	39.8	24.2	36.0
<i>1993—</i>					
October	34.6	41.6	46.1	32.7	42.7
November	32.8	39.0	48.8	35.0	43.5
December	31.8	36.7	43.7	28.8	39.4
<i>December quarter 1993</i>	33.1	39.1	46.2	32.1	41.9
GUEST ARRIVALS ('000)					
<i>December quarter 1992</i>	108.0	262.2	530.0	65.6	965.8
<i>1993—</i>					
October	26.7	117.6	207.7	29.3	381.2
November	24.1	109.1	214.6	28.2	376.0
December	23.5	106.2	203.1	24.5	357.4
<i>December quarter 1993</i>	74.4	333.0	625.4	82.0	1,114.6
AVERAGE LENGTH OF STAY (days)					
<i>December quarter 1992</i>	2.2	2.3	2.3	1.5	2.3
<i>December quarter 1993</i>	2.2	2.1	2.4	1.9	2.3
TAKINGS FROM ACCOMMODATION (\$'000)					
<i>December quarter 1992</i>	9,099	26,930	98,998	6,705	141,731
<i>1993—</i>					
October	1,893	11,275	38,136	3,309	54,612
November	1,814	10,384	40,060	3,530	55,788
December	1,738	9,609	33,529	2,890	47,765
<i>December quarter 1993</i>	5,444	31,267	111,725	9,729	158,165



TABLE 6 — HOTELS, MOTELS AND GUEST HOUSES WITH FACILITIES BY STAR GRADING,  
SYDNEY STATISTICAL DIVISION AND NEW SOUTH WALES (a)—continued

Particulars	New South Wales						Total
	Star grading						
	1	2	3	4	5	Ungraded	
ESTABLISHMENTS, CAPACITY AND EMPLOYMENT							
<i>December quarter 1992—</i>							
Establishments	43	609	731	110	19	226	1,738
Guest rooms	680	13,182	21,463	10,585	6,161	5,374	57,445
Bed spaces	1,750	39,550	64,450	30,522	13,530	14,721	164,523
Employment (persons)	344	4,868	8,434	7,238	6,118	3,050	30,052
<i>December quarter 1993—</i>							
Establishments	38	559	741	123	19	246	1,726
Guest rooms	561	11,312	21,820	11,712	5,726	5,770	56,901
Bed spaces	1,433	35,148	65,815	33,462	12,707	16,198	164,763
Employment (persons)	281	4,391	8,552	8,450	5,725	3,167	30,566
ROOM NIGHTS OCCUPIED ('000)							
<i>December quarter 1992</i>	25.5	530.6	1,023.9	571.9	347.7	157.7	2,657.3
<i>1993—</i>							
October	8.2	172.3	420.6	248.4	122.3	72.5	1,044.2
November	6.9	144.7	360.2	247.7	129.2	68.8	957.5
December	6.8	137.0	331.8	225.5	107.9	61.1	870.1
<i>December quarter 1993</i>	21.8	453.9	1,112.5	721.6	359.5	202.4	2,871.8
ROOM OCCUPANCY RATES (per cent)							
<i>December quarter 1992</i>	40.8	43.8	52.0	59.0	61.4	33.8	50.7
<i>1993—</i>							
October	46.9	49.2	62.2	68.4	68.9	40.6	59.2
November	40.8	43.8	55.2	70.5	75.2	39.9	56.5
December	39.0	39.9	49.1	62.1	60.8	34.4	49.6
<i>December quarter 1993</i>	42.3	44.3	55.5	67.0	68.2	38.3	55.1
GUEST NIGHTS ('000)							
<i>December quarter 1992</i>	42.8	983.7	1,907.1	993.5	557.2	261.0	4,745.4
<i>1993—</i>							
October	13.8	324.1	781.0	435.8	200.6	120.7	1,876.0
November	11.2	253.3	625.0	400.6	224.0	109.9	1,624.0
December	11.5	263.5	643.7	413.5	186.5	104.0	1,622.6
<i>December quarter 1993</i>	36.4	840.8	2,049.7	1,250.0	611.1	334.6	5,122.6
BED OCCUPANCY RATES (per cent)							
<i>December quarter 1992</i>	26.6	27.1	32.3	35.6	44.8	20.1	31.6
<i>1993—</i>							
October	31.0	29.8	38.3	42.0	50.9	24.1	36.7
November	26.0	25.2	31.7	39.9	58.8	22.7	33.2
December	26.0	25.1	31.6	39.9	47.3	20.8	32.1
<i>December quarter 1993</i>	27.6	26.8	33.9	40.6	52.3	22.5	34.0
GUEST ARRIVALS ('000)							
<i>December quarter 1992</i>	23.5	603.5	1,118.5	447.5	240.7	160.4	2,594.2
<i>1993—</i>							
October	7.5	204.1	459.0	197.9	77.5	70.1	1,016.2
November	5.6	157.8	369.2	185.1	85.0	61.3	864.1
December	6.0	167.0	382.5	188.3	74.1	59.1	876.9
<i>December quarter 1993</i>	19.1	528.9	1,210.7	571.3	236.7	190.5	2,757.2
AVERAGE LENGTH OF STAY (days)							
<i>December quarter 1992</i>	1.8	1.6	1.7	2.2	2.3	1.6	1.8
<i>December quarter 1993</i>	1.9	1.6	1.7	2.2	2.6	1.8	1.9
TAKINGS FROM ACCOMMODATION (\$'000)							
<i>December quarter 1992</i>	1,003	27,877	68,472	58,624	54,466	12,243	222,686
<i>1993—</i>							
October	338	8,691	28,543	25,613	18,512	5,422	87,119
November	290	7,136	24,101	25,334	19,914	5,293	82,068
December	297	7,165	23,229	22,779	16,261	4,643	74,374
<i>December quarter 1993</i>	926	22,992	75,872	73,726	54,687	15,358	243,561

(a) From December quarter 1993, establishments with fewer than 5 rooms have been formally excluded from the scope of this collection. See Explanatory Note 2 (page 32).

TABLE 7 — HOTELS, MOTELS AND GUEST HOUSES WITH FACILITIES BY STATISTICAL DIVISION,  
NEW SOUTH WALES (a)

Particulars	Sydney (SD)			Hunter (SD)			Illawarra (SD)		
	Licensed hotels	Motels, etc.	Total	Licensed hotels	Motels, etc.	Total	Licensed hotels	Motels, etc.	Total
<b>ESTABLISHMENTS, CAPACITY AND EMPLOYMENT</b>									
<i>December quarter 1992—</i>									
Establishments	106	247	353	21	136	157	16	106	122
Guest rooms	13,824	12,548	26,372	441	3,335	3,776	561	2,302	2,863
Bed spaces	32,592	34,620	67,212	1,116	10,450	11,566	1,786	6,809	8,595
Employment (persons)	12,190	5,310	17,500	447	1,534	1,981	739	882	1,621
<i>December quarter 1993—</i>									
Establishments	107	231	338	20	139	159	16	105	121
Guest rooms	14,593	10,910	25,503	431	3,472	3,903	558	2,269	2,827
Bed spaces	34,796	31,307	66,103	1,257	10,810	12,067	1,669	6,696	8,365
Employment (persons)	13,262	4,550	17,812	432	1,707	2,139	623	887	1,510
<b>ROOM NIGHTS OCCUPIED ('000)</b>									
<i>December quarter 1992</i>	737.2	570.4	1,307.6	17.9	154.1	171.9	26.6	92.4	119.0
<i>1993—</i>									
October	304.2	209.4	513.6	6.0	63.3	69.4	9.3	35.5	44.8
November	318.1	199.0	517.1	5.5	54.4	59.9	9.1	29.9	39.1
December	274.6	181.3	455.9	5.6	51.4	57.1	8.8	29.2	38.0
<i>December quarter 1993</i>	896.9	589.7	1,486.5	17.2	169.2	186.4	27.2	94.6	121.9
<b>ROOM OCCUPANCY RATES (per cent)</b>									
<i>December quarter 1992</i>	58.2	50.9	54.8	44.1	50.2	49.5	51.5	43.6	45.2
<i>1993—</i>									
October	67.2	61.9	65.0	45.1	58.9	57.3	53.9	50.5	51.1
November	72.7	61.2	67.8	42.6	52.3	51.2	54.4	44.0	46.0
December	60.7	53.7	57.7	42.1	47.8	47.2	50.9	41.6	43.5
<i>December quarter 1993</i>	66.8	58.9	63.4	43.3	53.0	51.9	53.0	45.4	46.9
<b>GUEST NIGHTS ('000)</b>									
<i>December quarter 1992</i>	1,181.9	1,008.7	2,190.7	31.6	274.9	306.6	44.7	172.3	217.0
<i>1993—</i>									
October	492.6	383.2	875.8	10.1	114.3	124.3	15.7	65.5	81.1
November	512.0	348.4	860.4	9.2	90.0	99.2	13.6	50.5	64.0
December	463.8	343.5	807.3	10.7	94.9	105.6	16.6	57.6	74.2
<i>December quarter 1993</i>	1,468.4	1,075.2	2,543.6	29.9	299.2	329.1	45.8	173.6	219.4
<b>BED OCCUPANCY RATES (per cent)</b>									
<i>December quarter 1992</i>	39.6	32.5	36.0	30.8	28.6	28.8	27.2	27.5	27.4
<i>1993—</i>									
October	45.7	39.5	42.7	25.9	34.1	33.2	30.3	31.5	31.3
November	49.0	37.3	43.5	24.3	27.8	27.4	27.1	25.1	25.5
December	43.0	35.4	39.4	27.4	28.3	28.2	32.1	27.8	28.7
<i>December quarter 1993</i>	45.9	37.4	41.9	25.9	30.1	29.6	29.8	28.2	28.5
<b>GUEST ARRIVALS ('000)</b>									
<i>December quarter 1992</i>	531.3	434.4	965.8	16.3	168.0	184.3	25.4	102.4	127.8
<i>1993—</i>									
October	225.0	156.2	381.2	5.4	68.5	73.9	6.9	39.3	46.2
November	233.5	142.5	376.0	4.7	56.2	60.9	6.0	32.1	38.1
December	216.7	140.7	357.4	5.2	56.5	61.7	6.1	32.6	38.7
<i>December quarter 1993</i>	675.2	439.4	1,114.6	15.3	181.2	196.5	19.0	103.9	122.9
<b>AVERAGE LENGTH OF STAY (days)</b>									
<i>December quarter 1992</i>	2.2	2.3	2.3	1.9	1.6	1.7	1.8	1.7	1.7
<i>December quarter 1993</i>	2.2	2.4	2.3	1.9	1.7	1.7	2.4	1.7	1.8
<b>TAKINGS FROM ACCOMMODATION (\$'000)</b>									
<i>December quarter 1992</i>	90,977	50,755	141,731	878	10,870	11,748	2,343	6,485	8,828
<i>1993—</i>									
October	36,244	18,369	54,612	384	4,718	5,102	855	2,618	3,473
November	38,197	17,591	55,788	321	3,926	4,247	813	2,155	2,968
December	31,696	16,069	47,765	361	3,925	4,287	813	2,160	2,973
<i>December quarter 1993</i>	106,136	52,029	158,165	1,066	12,569	13,636	2,480	6,933	9,414

TABLE 7 — HOTELS, MOTELS AND GUEST HOUSES WITH FACILITIES BY STATISTICAL DIVISION,  
NEW SOUTH WALES (a)—continued

Particulars	Richmond - Tweed (SD)			Mid - North Coast (SD)			Northern (SD)		
	Licensed hotels	Motels, etc.	Total	Licensed hotels	Motels, etc.	Total	Licensed hotels	Motels, etc.	Total
ESTABLISHMENTS, CAPACITY AND EMPLOYMENT									
<i>December quarter 1992—</i>									
Establishments	9	97	106	15	188	203	12	112	124
Guest rooms	140	1,822	1,962	255	3,966	4,221	160	2,516	2,676
Bed spaces	417	5,897	6,314	631	12,768	13,399	434	7,826	8,260
Employment (persons)	125	604	729	219	1,802	2,021	94	824	918
<i>December quarter 1993—</i>									
Establishments	9	101	110	13	181	194	11	115	126
Guest rooms	136	1,877	2,013	251	3,896	4,147	163	2,573	2,736
Bed spaces	420	6,125	6,545	637	12,678	13,315	434	7,932	8,366
Employment (persons)	127	634	761	199	1,721	1,920	93	819	912
ROOM NIGHTS OCCUPIED ('000)									
<i>December quarter 1992</i>	5.2	91.3	96.5	9.6	203.5	213.1	3.8	116.9	120.8
<i>1993—</i>									
October	2.3	33.9	36.2	3.7	78.3	82.0	1.5	45.5	46.9
November	1.8	27.3	29.1	2.8	62.6	65.4	1.5	36.1	37.5
December	1.6	28.7	30.3	2.6	66.2	68.8	1.2	36.9	38.1
<i>December quarter 1993</i>	5.8	89.8	95.6	9.1	207.2	216.3	4.1	118.5	122.6
ROOM OCCUPANCY RATES (per cent)									
<i>December quarter 1992</i>	40.7	54.4	53.5	40.8	55.8	54.9	26.1	50.5	49.1
<i>1993—</i>									
October	54.8	58.2	58.0	48.1	65.0	64.0	29.6	57.0	55.3
November	44.1	48.5	48.2	37.2	54.6	53.5	29.7	46.7	45.7
December	38.9	49.3	48.6	33.2	56.0	54.6	22.9	46.3	44.9
<i>December quarter 1993</i>	46.0	52.0	51.6	39.5	58.6	57.4	27.4	50.0	48.7
GUEST NIGHTS ('000)									
<i>December quarter 1992</i>	9.3	183.5	192.8	15.4	435.0	450.4	6.0	212.8	218.8
<i>1993—</i>									
October	4.1	65.4	69.5	6.5	167.0	173.4	2.4	84.1	86.5
November	3.1	49.3	52.4	4.4	122.3	126.7	2.1	60.6	62.7
December	3.0	58.3	61.3	4.3	151.1	155.4	1.9	70.8	72.7
<i>December quarter 1993</i>	10.1	173.1	183.2	15.1	440.3	455.5	6.4	215.5	222.0
BED OCCUPANCY RATES (per cent)									
<i>December quarter 1992</i>	24.2	33.8	33.2	26.5	37.0	36.5	15.1	29.6	28.8
<i>1993—</i>									
October	31.2	34.5	34.2	32.8	42.6	42.1	18.0	34.2	33.4
November	24.4	26.8	26.7	22.8	32.6	32.2	16.3	25.5	25.0
December	23.0	30.7	30.2	21.7	39.1	38.3	14.1	28.8	28.0
<i>December quarter 1993</i>	26.2	30.7	30.4	25.8	38.2	37.6	16.1	29.5	28.8
GUEST ARRIVALS ('000)									
<i>December quarter 1992</i>	4.6	106.5	111.1	8.6	251.4	260.0	4.6	157.2	161.8
<i>1993—</i>									
October	2.0	38.5	40.5	3.8	98.0	101.9	1.8	60.7	62.5
November	1.7	30.4	32.1	2.6	71.1	73.7	1.6	44.5	46.1
December	1.5	33.0	34.5	2.6	86.6	89.2	1.5	54.7	56.2
<i>December quarter 1993</i>	5.2	101.9	107.1	9.0	255.8	264.8	4.8	159.9	164.7
AVERAGE LENGTH OF STAY (days)									
<i>December quarter 1992</i>	2.0	1.7	1.7	1.8	1.7	1.7	1.3	1.4	1.4
<i>December quarter 1993</i>	2.0	1.7	1.7	1.7	1.7	1.7	1.3	1.3	1.3
TAKINGS FROM ACCOMMODATION (\$'000)									
<i>December quarter 1992</i>	220	5,085	5,304	343	12,459	12,802	145	6,365	6,510
<i>1993—</i>									
October	95	1,911	2,006	156	4,882	5,038	53	2,516	2,569
November	82	1,508	1,590	96	3,775	3,871	49	1,934	1,983
December	76	1,844	1,920	95	4,718	4,812	39	2,034	2,073
<i>December quarter 1993</i>	253	5,263	5,516	346	13,375	13,721	141	6,484	6,625

TABLE 7 — HOTELS, MOTELS AND GUEST HOUSES WITH FACILITIES BY STATISTICAL DIVISION,  
NEW SOUTH WALES (a)—continued

Particulars	North Western and Far West (SDs)			Central West (SD)			South Eastern (SD)		
	Licensed hotels	Motels, etc.	Total	Licensed hotels	Motels, etc.	Total	Licensed hotels	Motels, etc.	Total
<b>ESTABLISHMENTS, CAPACITY AND EMPLOYMENT</b>									
<i>December quarter 1992—</i>									
Establishments	19	103	122	15	79	94	28	192	220
Guest rooms	289	2,367	2,656	422	1,709	2,131	986	4,293	5,279
Bed spaces	764	7,565	8,329	1,139	5,207	6,346	4,000	13,603	17,603
Employment (persons)	237	834	1,071	324	570	894	266	1,098	1,364
<i>December quarter 1993—</i>									
Establishments	13	109	122	14	77	91	28	193	221
Guest rooms	254	2,457	2,711	416	1,708	2,124	991	4,315	5,306
Bed spaces	685	7,789	8,474	1,133	5,267	6,400	4,043	13,790	17,833
Employment (persons)	214	892	1,106	337	612	949	387	1,115	1,502
<b>ROOM NIGHTS OCCUPIED ('000)</b>									
<i>December quarter 1992</i>	8.5	110.0	118.5	17.3	77.7	95.0	14.6	149.7	164.2
<i>1993—</i>									
October	3.7	49.6	53.4	7.4	32.0	39.3	4.7	56.6	61.3
November	2.9	37.9	40.8	6.5	28.0	34.6	3.7	47.1	50.8
December	2.3	34.7	37.0	4.6	21.9	26.6	4.7	42.9	47.5
<i>December quarter 1993</i>	9.0	122.2	131.2	18.5	81.9	100.5	13.1	146.6	159.7
<b>ROOM OCCUPANCY RATES (per cent)</b>									
<i>December quarter 1992</i>	32.0	50.5	48.5	44.5	49.5	48.5	16.0	37.9	33.8
<i>1993—</i>									
October	47.4	65.2	63.5	57.2	60.4	59.7	15.3	42.4	37.4
November	38.1	51.4	50.1	52.4	54.7	54.2	16.9	36.6	33.7
December	29.6	45.6	44.1	36.0	41.4	40.4	18.9	32.1	30.0
<i>December quarter 1993</i>	38.4	54.1	52.6	48.5	52.1	51.4	16.9	37.0	33.7
<b>GUEST NIGHTS ('000)</b>									
<i>December quarter 1992</i>	14.2	209.5	223.7	29.0	140.2	169.3	29.0	282.0	310.9
<i>1993—</i>									
October	5.8	97.0	102.8	12.4	58.7	71.1	9.4	105.6	115.0
November	4.3	63.9	68.2	10.4	46.0	56.4	6.3	84.1	90.4
December	4.0	69.8	73.9	7.4	39.4	46.8	9.1	84.1	93.1
<i>December quarter 1993</i>	14.2	230.7	244.8	30.3	144.1	174.4	24.8	273.7	298.5
<b>BED OCCUPANCY RATES (per cent)</b>									
<i>December quarter 1992</i>	20.2	30.1	29.2	27.7	29.3	29.0	7.9	22.5	19.2
<i>1993—</i>									
October	27.4	40.2	39.1	35.4	36.0	35.9	7.5	24.8	20.9
November	20.9	27.3	26.8	30.7	29.1	29.4	8.3	20.4	18.5
December	19.0	28.9	28.1	21.1	24.1	23.6	10.1	19.7	18.0
<i>December quarter 1993</i>	22.5	32.2	31.4	29.1	29.7	29.6	8.5	21.7	19.2
<b>GUEST ARRIVALS ('000)</b>									
<i>December quarter 1992</i>	8.9	156.2	165.1	16.3	106.7	122.9	15.1	181.0	196.2
<i>1993—</i>									
October	3.8	70.6	74.4	6.5	41.7	48.2	5.0	69.2	74.1
November	2.8	45.6	48.5	5.7	32.6	38.3	4.1	54.3	58.4
December	3.0	53.7	56.7	4.2	31.1	35.3	5.3	55.7	61.0
<i>December quarter 1993</i>	9.6	169.9	179.6	16.4	105.5	121.9	14.4	179.1	193.5
<b>AVERAGE LENGTH OF STAY (days)</b>									
<i>December quarter 1992</i>	1.6	1.3	1.4	1.8	1.3	1.4	1.9	1.6	1.6
<i>December quarter 1993</i>	1.5	1.4	1.4	1.9	1.4	1.4	1.7	1.5	1.5
<b>TAKINGS FROM ACCOMMODATION (\$'000)</b>									
<i>December quarter 1992</i>	467	6,147	6,614	785	4,685	5,469	929	8,367	9,296
<i>1993—</i>									
October	199	2,899	3,098	362	2,024	2,386	275	3,074	3,349
November	155	2,060	2,216	285	1,674	1,959	190	2,559	2,749
December	124	1,997	2,121	216	1,318	1,534	272	2,556	2,828
<i>December quarter 1993</i>	478	6,957	7,435	863	5,016	5,878	737	8,189	8,927

**TABLE 7 — HOTELS, MOTELS AND GUEST HOUSES WITH FACILITIES BY STATISTICAL DIVISION,  
NEW SOUTH WALES (a)—continued**

Particulars	Murrumbidgee (SD)			Murray (SD)			New South Wales		
	Licensed hotels	Motels, etc.	Total	Licensed hotels	Motels, etc.	Total	Licensed hotels	Motels, etc.	Total
<b>ESTABLISHMENTS, CAPACITY AND EMPLOYMENT</b>									
<i>December quarter 1992—</i>									
Establishments	14	71	85	22	130	152	277	1,461	1,738
Guest rooms	236	1,707	1,943	456	3,110	3,566	17,770	39,675	57,445
Bed spaces	603	5,086	5,689	1,207	10,003	11,210	44,689	119,834	164,523
Employment (persons)	146	546	692	247	1,014	1,261	15,034	15,018	30,052
<i>December quarter 1993—</i>									
Establishments	14	75	89	22	133	155	267	1,459	1,726
Guest rooms	262	1,775	2,037	457	3,137	3,594	18,512	38,389	56,901
Bed spaces	631	5,396	6,027	1,211	10,057	11,268	46,916	117,847	164,763
Employment (persons)	131	588	719	233	1,003	1,236	16,038	14,528	30,566
<b>ROOM NIGHTS OCCUPIED ('000)</b>									
<i>December quarter 1992</i>									
	9.4	77.1	86.5	14.5	149.6	164.2	864.6	1,792.7	2,657.3
<i>1993—</i>									
October	3.5	31.3	34.9	6.4	56.0	62.4	352.9	691.4	1,044.2
November	3.5	27.6	31.0	4.7	47.4	52.1	360.1	597.3	957.5
December	2.7	23.8	26.5	4.1	40.2	44.3	312.8	557.2	870.1
<i>December quarter 1993</i>									
	9.7	82.7	92.4	15.2	143.6	158.8	1,025.8	1,846.0	2,871.8
<b>ROOM OCCUPANCY RATES (per cent)</b>									
<i>December quarter 1992</i>									
	43.2	49.1	48.4	34.6	52.3	50.0	53.1	49.6	50.7
<i>1993—</i>									
October	43.5	56.9	55.2	45.1	57.6	56.0	61.5	58.1	59.2
November	44.0	51.8	50.8	34.6	50.3	48.3	65.7	52.1	56.5
December	33.6	43.2	41.9	28.9	41.4	39.8	55.1	47.0	49.6
<i>December quarter 1993</i>									
	40.3	50.6	49.3	36.2	49.8	48.0	60.7	52.4	55.1
<b>GUEST NIGHTS ('000)</b>									
<i>December quarter 1992</i>									
	13.9	138.3	152.2	23.5	289.6	313.1	1,398.5	3,346.9	4,745.4
<i>1993—</i>									
October	5.2	55.0	60.1	10.6	105.5	116.1	574.7	1,301.2	1,876.0
November	4.7	44.5	49.2	7.3	87.1	94.3	577.3	1,046.6	1,624.0
December	3.9	41.7	45.6	6.8	79.9	86.7	531.4	1,091.3	1,622.6
<i>December quarter 1993</i>									
	13.8	141.2	155.0	24.6	272.6	297.1	1,683.4	3,439.1	5,122.6
<b>BED OCCUPANCY RATES (per cent)</b>									
<i>December quarter 1992</i>									
	25.1	29.6	29.1	21.2	31.5	30.4	34.1	30.6	31.6
<i>1993—</i>									
October	26.4	32.9	32.2	28.1	33.9	33.2	39.5	35.6	36.7
November	25.1	27.5	27.2	20.0	28.9	27.9	42.4	29.7	33.2
December	19.9	24.9	24.4	18.0	25.6	24.8	37.5	29.9	32.1
<i>December quarter 1993</i>									
	23.8	28.4	27.9	22.1	29.5	28.7	39.7	31.8	34.0
<b>GUEST ARRIVALS ('000)</b>									
<i>December quarter 1992</i>									
	8.4	96.8	105.2	14.0	180.1	194.1	653.5	1,940.7	2,594.2
<i>1993—</i>									
October	3.2	39.4	42.6	5.7	65.1	70.7	269.1	747.0	1,016.2
November	2.7	31.8	34.5	4.4	53.3	57.7	269.6	594.5	864.1
December	2.2	31.6	33.8	4.0	48.3	52.3	252.3	624.6	876.9
<i>December quarter 1993</i>									
	8.0	102.8	110.9	14.0	166.7	180.7	791.0	1,966.2	2,757.2
<b>AVERAGE LENGTH OF STAY (days)</b>									
<i>December quarter 1992</i>									
	1.7	1.4	1.4	1.7	1.6	1.6	2.1	1.7	1.8
<i>December quarter 1993</i>									
	1.7	1.4	1.4	1.8	1.6	1.6	2.1	1.7	1.9
<b>TAKINGS FROM ACCOMMODATION (\$'000)</b>									
<i>December quarter 1992</i>									
	440	4,345	4,785	545	9,052	9,597	98,071	124,615	222,686
<i>1993—</i>									
October	151	1,830	1,982	232	3,272	3,504	39,006	48,113	87,119
November	152	1,565	1,717	176	2,803	2,980	40,515	41,553	82,068
December	110	1,372	1,482	159	2,421	2,580	33,961	40,413	74,374
<i>December quarter 1993</i>									
	414	4,767	5,181	567	8,496	9,064	113,482	130,079	243,561

(a) From December quarter 1993, establishments with fewer than 5 rooms have been formally excluded from the scope of this collection. See Explanatory Note 2 (page 32).

TABLE 8 — HOTELS, MOTELS AND GUEST HOUSES WITH FACILITIES: STATISTICAL DIVISIONS

Statistical Divisions and selected Statistical Local Areas	Establish- ments	Guest rooms	Bed spaces	Employ- ment (persons)	Room nights occupied			Room occupancy rates (per cent)				
					Oct.	Nov.	Dec.	Dec. qtr	Oct.	Nov.	Dec.	Dec. qtr
SYDNEY STATISTICAL DIVISION												
Ashfield (M)	6	248	737	63	4,339	3,832	3,777	11,948	56.4	51.5	49.1	52.4
Bankstown (C)	10	348	979	209	6,027	5,478	5,117	16,622	55.9	52.5	47.4	51.9
Blacktown (C)	6	234	732	186	3,342	2,777	2,769	8,888	46.1	39.6	38.2	41.3
Blue Mountains (C)	32	1,103	2,958	855	20,000	14,417	12,542	46,959	58.5	43.6	37.1	46.4
Camden (M)	4	126	375	47	2,021	1,483	1,243	4,747	51.7	39.2	31.8	41.0
Campbelltown (C)	3	123	399	34	1,843	1,699	1,520	5,062	48.3	46.0	39.9	44.7
Gosford (C)	24	812	2,777	712	14,472	11,580	13,506	39,558	57.5	47.5	53.7	53.0
Hawkesbury (C)	11	275	722	166	4,096	4,095	3,759	11,950	48.0	49.6	44.1	47.2
Hornsby (S)	7	234	601	187	3,998	2,728	4,006	10,732	55.1	38.9	55.2	49.9
Lane Cove (M)	7	259	698	141	5,073	5,647	5,380	16,100	63.2	72.7	67.0	67.6
Leichhardt (M)	4	151	411	76	3,427	3,377	3,027	9,831	73.2	74.5	64.7	70.8
Liverpool (C)	6	293	753	81	3,433	2,976	3,545	9,954	37.8	33.9	39.0	36.9
Manly (M)	7	425	1,348	452	8,544	9,355	9,714	27,613	64.9	73.4	73.7	70.6
North Sydney (M)	6	751	1,827	390	13,765	15,380	12,895	42,040	59.1	68.3	55.4	60.8
Parramatta (C)	10	1,013	2,253	658	19,766	21,523	17,113	58,402	62.9	70.8	54.5	62.7
Penrith (C)	7	338	946	182	6,360	5,046	5,319	16,725	60.7	49.8	50.8	53.8
Pittwater (M)	4	78	184	243	971	1,193	1,091	3,255	44.7	56.8	45.1	48.7
Randwick (C)	12	757	2,453	460	12,153	12,588	12,245	36,986	51.8	55.4	52.2	53.1
Rockdale (M)	4	644	1,566	495	12,575	12,280	10,936	35,791	63.0	63.6	54.8	60.4
Ryde (C)	5	377	926	334	8,076	7,983	6,640	22,699	69.1	70.6	56.8	65.4
South Sydney (C)	40	4,562	12,309	2,084	97,736	100,080	84,305	282,121	69.1	74.1	59.6	67.5
Strathfield (M)	4	127	389	50	1,750	1,819	1,275	4,844	44.5	47.7	32.4	41.5
Sutherland (S)	10	301	771	209	4,985	4,652	4,359	13,996	53.4	51.5	46.7	50.5
Sydney (C) — Inner	23	6,595	14,933	6,133	147,617	156,118	131,103	434,838	72.2	78.9	64.1	71.7
Sydney (C) — Remainder	15	2,431	6,371	1,356	53,850	58,570	48,290	160,710	71.5	80.3	64.1	71.9
Warringah (S)	7	105	289	225	1,593	1,588	1,423	4,604	48.9	50.4	43.7	47.7
Waverley (M)	6	423	1,251	191	9,354	9,554	9,819	28,727	71.3	75.3	74.9	73.8
Wollondilly (S)	3	64	156	28	713	643	434	1,790	35.9	33.5	21.9	30.4
Woolahra (M)	6	426	982	325	8,813	9,158	8,185	26,156	66.7	71.7	62.0	66.7
Wyong (S)	29	580	1,772	349	8,729	7,300	7,979	24,008	48.5	42.0	44.4	45.0
Balance	20	1,300	3,235	891	24,168	22,160	22,553	68,881	60.0	56.8	56.0	57.6
<i>Sydney (SD)</i>	<i>338</i>	<i>25,503</i>	<i>66,103</i>	<i>17,812</i>	<i>513,589</i>	<i>517,079</i>	<i>455,869</i>	<i>1,486,537</i>	<i>65.0</i>	<i>67.8</i>	<i>57.7</i>	<i>63.4</i>
HUNTER STATISTICAL DIVISION												
Cessnock (C)	22	407	1,206	340	8,064	6,082	5,013	19,159	63.9	49.8	39.7	51.2
Gloucester (S)	4	87	273	40	1,530	1,155	1,004	3,689	56.7	44.3	37.2	46.1
Great Lakes (S)	31	606	2,022	233	9,461	8,277	8,731	26,469	50.4	45.5	46.5	47.5
Lake Macquarie (C)	20	404	1,230	265	6,281	5,465	5,417	17,163	50.2	45.1	43.3	46.2
Maitland (C)	7	186	532	121	3,252	2,744	3,452	9,448	56.4	49.2	59.9	55.2
Muswellbrook (S)	9	226	679	67	4,358	4,446	3,427	12,231	62.2	65.6	48.9	58.8
Newcastle (C) — Inner & Remainder	19	745	2,201	324	13,791	12,290	10,069	36,150	59.7	55.0	43.6	52.7
Port Stephens (S)	28	816	2,635	548	15,270	13,373	13,933	42,576	60.4	54.6	55.1	56.7
Scone (S)	6	113	342	54	1,604	1,269	1,273	4,146	45.8	37.4	36.3	39.9
Singleton (S)	7	242	742	130	4,739	3,956	3,945	12,640	63.2	54.5	52.6	56.8
Balance	6	71	205	17	1,026	893	793	2,712	46.6	41.9	36.0	41.5
<i>Hunter (SD)</i>	<i>159</i>	<i>3,903</i>	<i>12,067</i>	<i>2,139</i>	<i>69,376</i>	<i>59,950</i>	<i>57,057</i>	<i>186,383</i>	<i>57.3</i>	<i>51.2</i>	<i>47.2</i>	<i>51.9</i>
ILLAWARRA STATISTICAL DIVISION												
Kiama (M)	10	281	988	141	3,442	2,841	3,558	9,841	39.5	33.7	40.8	38.1
Shellharbour (M)	4	84	235	73	769	982	1,088	2,839	29.5	39.0	41.8	36.7
Shoalhaven (C)	55	921	2,877	329	12,739	10,596	11,982	35,317	44.6	38.3	42.0	41.7
Wingecarribee (S)	29	754	1,970	380	13,674	10,839	7,562	32,075	58.5	47.9	32.6	46.4
Wollongong (C)	23	787	2,295	587	14,197	13,793	13,806	41,796	58.2	58.4	56.6	57.7
<i>Illawarra (SD)</i>	<i>121</i>	<i>2,827</i>	<i>8,365</i>	<i>1,510</i>	<i>44,821</i>	<i>39,051</i>	<i>37,996</i>	<i>121,868</i>	<i>51.1</i>	<i>46.0</i>	<i>43.5</i>	<i>46.9</i>

For footnotes see end of table.

## AND SELECTED STATISTICAL LOCAL AREAS (a), NEW SOUTH WALES, DECEMBER QUARTER 1993

<i>Guest nights</i>				<i>Guest arrivals</i>				<i>Takings from accommodation (\$'000)</i>			
<i>Oct.</i>	<i>Nov.</i>	<i>Dec.</i>	<i>Dec. qtr</i>	<i>Oct.</i>	<i>Nov.</i>	<i>Dec.</i>	<i>Dec. qtr</i>	<i>Oct.</i>	<i>Nov.</i>	<i>Dec.</i>	<i>Dec. qtr</i>
<b>SYDNEY STATISTICAL DIVISION</b>											
7,765	6,613	7,125	21,503	4,042	4,066	4,653	12,761	264	231	237	732
10,282	7,939	7,606	25,827	5,723	4,764	4,946	15,433	458	431	397	1,286
6,964	5,203	5,861	18,028	4,287	2,967	3,847	11,101	213	180	180	574
39,161	27,824	25,934	92,919	18,688	15,187	12,690	46,565	2,116	1,426	1,320	4,863
3,658	2,690	2,495	8,843	3,034	2,247	1,922	7,203	118	85	74	277
2,922	2,634	2,344	7,900	2,061	1,826	1,540	5,427	123	114	108	345
29,535	21,405	29,151	80,091	13,507	11,209	13,599	38,315	1,284	1,070	1,289	3,642
6,791	6,548	6,522	19,861	4,084	4,042	3,901	12,027	269	283	261	813
6,565	4,352	6,994	17,911	3,648	2,491	3,910	10,049	350	235	351	936
7,311	8,268	8,420	23,999	3,616	4,053	4,265	11,934	400	462	419	1,281
6,419	5,964	6,198	18,581	2,536	2,426	2,637	7,599	275	269	245	789
5,182	4,654	5,688	15,524	3,191	3,223	3,357	9,771	246	202	248	696
14,182	14,262	18,868	47,312	6,881	7,279	7,254	21,414	992	1,130	1,222	3,345
19,430	20,416	19,294	59,140	9,169	9,965	8,730	27,864	1,452	1,630	1,314	4,396
26,173	28,571	23,027	77,771	12,622	13,820	11,109	37,551	1,581	1,724	1,315	4,620
12,554	9,348	10,206	32,108	5,596	4,437	4,460	14,493	535	403	423	1,361
1,542	1,813	1,813	5,168	690	810	933	2,433	89	110	114	313
22,595	20,409	22,644	65,648	7,504	7,829	7,032	22,365	976	1,046	1,057	3,080
19,583	17,364	18,056	55,003	13,118	11,944	13,612	38,674	1,293	1,275	1,117	3,685
12,617	14,029	11,149	37,795	3,221	3,357	2,792	9,370	922	925	762	2,610
174,454	174,688	151,398	500,540	66,118	65,642	56,917	188,677	8,197	8,335	6,893	23,424
3,076	2,544	2,134	7,754	1,578	1,510	1,303	4,391	128	123	95	346
8,210	7,579	7,515	23,304	2,952	2,793	2,755	8,500	409	353	331	1,093
241,328	265,556	230,670	737,554	101,975	109,329	101,053	312,357	21,497	23,230	18,860	63,587
99,932	101,311	90,057	291,300	40,637	39,757	37,316	117,710	5,923	6,176	4,930	17,029
2,319	2,576	1,987	6,882	765	881	770	2,416	86	86	82	254
17,698	16,354	19,099	53,151	4,996	4,758	4,541	14,295	759	835	799	2,393
1,054	855	667	2,576	652	588	389	1,629	37	41	26	105
13,629	14,259	12,422	40,310	5,801	6,069	5,512	17,382	880	925	855	2,660
16,977	13,664	17,270	47,911	8,355	7,798	7,965	24,118	680	573	657	1,909
35,940	30,754	34,708	101,402	20,185	18,933	21,696	60,814	2,060	1,880	1,783	5,723
875,848	860,446	807,322	2,543,616	381,232	376,000	357,406	1,114,638	54,612	55,788	47,765	158,165
<b>HUNTER STATISTICAL DIVISION</b>											
14,175	9,951	8,826	32,952	9,049	7,136	6,091	22,276	884	677	500	2,060
3,224	2,065	1,659	6,948	1,413	1,103	1,019	3,535	88	60	55	203
19,828	15,856	18,419	54,103	12,023	9,711	10,113	31,847	501	413	507	1,420
9,746	8,214	9,238	27,198	6,595	5,758	5,797	18,150	441	387	369	1,197
5,696	4,265	5,063	15,024	3,416	2,592	2,750	8,758	218	176	229	623
6,843	6,356	5,424	18,623	4,308	3,606	3,456	11,370	219	216	198	634
21,351	17,326	15,843	54,520	11,594	10,074	9,818	31,486	1,016	892	738	2,647
31,457	26,035	31,232	88,724	17,290	15,070	16,149	48,509	1,280	1,066	1,339	3,685
2,411	1,840	1,832	6,083	2,101	1,471	1,516	5,088	90	60	60	211
7,532	5,689	6,376	19,597	4,640	3,320	3,736	11,696	319	263	258	840
2,070	1,568	1,666	5,304	1,483	1,092	1,256	3,831	45	37	33	116
124,333	99,165	105,578	329,076	73,912	60,933	61,701	196,546	5,102	4,247	4,287	13,636
<b>ILLAWARRA STATISTICAL DIVISION</b>											
6,774	5,110	7,540	19,424	4,884	4,031	4,738	13,653	233	191	269	693
1,322	1,634	1,994	4,950	843	989	1,273	3,105	37	39	52	128
24,379	18,819	25,434	68,632	15,010	12,107	14,074	41,191	781	625	797	2,203
25,097	17,685	13,802	56,584	14,901	10,668	8,770	34,339	1,268	1,005	663	2,936
23,544	20,792	25,443	69,779	10,519	10,263	9,868	30,650	1,154	1,108	1,192	3,454
81,116	64,040	74,213	219,369	46,157	38,058	38,723	122,938	3,473	2,968	2,973	9,414

TABLE 8 — HOTELS, MOTELS AND GUEST HOUSES WITH FACILITIES: STATISTICAL DIVISIONS

Statistical Divisions and selected Statistical Local Areas	Establish- ments	Guest rooms	Bed spaces	Employ- ment (persons)	Room nights occupied				Room occupancy rates (per cent)			
					Oct.	Nov.	Dec.	Dec. qtr	Oct.	Nov.	Dec.	Dec. qtr
<b>RICHMOND — TWEED STATISTICAL DIVISION</b>												
Ballina (S)	26	479	1,514	175	9,696	7,631	7,761	25,088	65.3	53.1	52.3	56.9
Byron (S)	24	390	1,459	192	7,362	6,311	7,366	21,039	60.9	53.9	60.9	58.6
Casino (M)	5	101	306	29	1,249	1,128	860	3,237	39.9	37.2	27.5	34.8
Lismore (C)	11	268	811	85	4,708	4,192	3,502	12,402	56.7	52.1	42.2	50.3
Tweed (S) Parts A & B	40	732	2,329	265	12,534	9,254	10,271	32,059	55.2	42.1	45.3	47.6
Balance	4	43	126	15	651	574	549	1,774	48.8	44.5	41.2	44.8
<i>Richmond — Tweed (SD)</i>	<i>110</i>	<i>2,013</i>	<i>6,545</i>	<i>761</i>	<i>36,200</i>	<i>29,090</i>	<i>30,309</i>	<i>95,599</i>	<i>58.0</i>	<i>48.2</i>	<i>48.6</i>	<i>51.6</i>
<b>MID-NORTH COAST STATISTICAL DIVISION</b>												
Bellingen (S)	6	90	271	36	1,482	1,098	1,036	3,616	53.1	40.7	37.1	43.7
Coffs Harbour (C)	51	1,420	4,877	810	30,689	26,364	26,919	83,972	69.7	61.9	61.2	64.3
Grafton (C)	17	368	996	142	7,328	6,211	4,926	18,465	64.2	63.7	50.8	59.8
Hastings (M)	45	964	3,194	440	20,689	15,613	17,727	54,029	69.2	54.0	59.3	60.9
Kempsey (S)	18	383	1,119	139	6,085	3,896	4,694	14,675	51.3	35.6	41.6	43.0
Maclean (S)	13	171	547	42	2,746	2,026	1,916	6,688	51.8	39.5	36.1	42.5
Nambucca (S)	14	245	784	117	4,656	3,337	3,681	11,674	61.3	45.4	48.5	51.8
Taree, Greater (C)	26	437	1,333	122	7,267	5,635	6,339	19,241	54.8	43.9	47.8	48.9
Balance	4	69	194	72	1,103	1,267	1,549	3,919	51.6	61.2	72.4	61.7
<i>Mid-North Coast (SD)</i>	<i>194</i>	<i>4,147</i>	<i>13,315</i>	<i>1,920</i>	<i>82,045</i>	<i>65,447</i>	<i>68,787</i>	<i>216,279</i>	<i>64.0</i>	<i>53.5</i>	<i>54.6</i>	<i>57.4</i>
<b>NORTHERN STATISTICAL DIVISION</b>												
Armidale (C)	17	426	1,396	152	7,713	6,228	6,967	20,908	58.4	48.7	52.8	53.3
Dumaresq (S)	3	44	141	16	897	667	754	2,318	65.8	50.5	55.3	57.3
Glen Innes (M)	10	202	611	83	3,510	2,734	2,778	9,022	56.1	45.1	44.4	48.5
Gunnedah (S)	7	141	434	31	2,519	1,831	1,814	6,164	57.6	43.3	41.5	47.5
Inverell (S) Parts A & B	6	131	348	49	2,068	1,614	1,691	5,373	50.9	41.1	41.6	44.6
Moree Plains (S)	17	448	1,317	103	7,508	6,225	6,357	20,090	54.1	46.3	45.8	48.7
Narrabri (S)	11	191	613	64	3,363	3,140	2,989	9,492	56.8	54.8	50.5	54.0
Tamworth (C)	29	762	2,406	295	14,079	10,824	10,407	35,310	59.6	47.3	44.1	50.4
Tenterfield (S)	8	158	452	54	2,214	1,989	2,172	6,375	45.2	42.0	44.3	43.9
Uralla (S)	3	45	116	13	545	395	430	1,370	39.1	29.3	30.8	33.1
Balance	15	188	532	52	2,529	1,873	1,734	6,136	43.4	33.2	29.8	35.5
<i>Northern (SD)</i>	<i>126</i>	<i>2,736</i>	<i>8,366</i>	<i>912</i>	<i>46,945</i>	<i>37,520</i>	<i>38,093</i>	<i>122,558</i>	<i>55.3</i>	<i>45.7</i>	<i>44.9</i>	<i>48.7</i>
<b>NORTH WESTERN AND FAR WEST STATISTICAL DIVISIONS</b>												
Bogan (S)	4	108	310	31	1,689	1,388	1,084	4,161	50.4	42.8	32.4	41.9
Bourke (S)	4	64	182	15	992	945	756	2,693	50.0	49.2	38.1	45.7
Broken Hill (C)	13	320	910	95	6,438	4,628	3,019	14,085	64.9	48.2	30.4	47.8
Central Darling (S)	3	38	111	12	639	591	509	1,739	54.2	51.8	43.2	49.7
Cobar (S)	7	179	511	82	2,601	2,017	2,037	6,655	46.9	37.6	36.7	40.4
Coonabarabran (S)	11	273	912	101	5,284	3,377	4,173	12,834	62.4	41.2	49.3	51.1
Coonamble (S)	3	51	135	11	836	908	636	2,380	52.9	59.3	40.2	50.7
Dubbo (C)	32	801	2,658	403	19,416	14,634	14,657	48,707	78.2	60.9	59.0	66.1
Gilgandra (S)	10	153	503	40	2,770	1,812	2,111	6,693	58.4	39.5	44.5	47.5
Mudgee (S)	13	333	1,154	174	6,843	5,716	3,803	16,362	66.3	57.2	36.8	53.4
Narromine (S)	5	79	219	43	1,194	1,035	1,229	3,458	48.8	43.7	50.2	47.6
Walgett (S)	7	172	469	63	2,637	2,100	1,515	6,252	49.5	40.7	28.4	39.5
Wellington (S)	5	73	209	15	1,076	769	883	2,728	47.5	35.1	39.0	40.6
Balance	5	67	191	21	956	863	638	2,457	46.0	42.9	30.7	39.9
<i>North Western (SD) and Far West (SD)</i>	<i>122</i>	<i>2,711</i>	<i>8,474</i>	<i>1,106</i>	<i>53,371</i>	<i>40,783</i>	<i>37,050</i>	<i>131,204</i>	<i>63.5</i>	<i>50.1</i>	<i>44.1</i>	<i>52.6</i>

For footnotes see end of table.



## AND SELECTED STATISTICAL LOCAL AREAS (a), NEW SOUTH WALES, DECEMBER QUARTER 1993 —continued

Guest nights				Guest arrivals				Takings from accommodation (\$'000)			
Oct.	Nov.	Dec.	Dec. qtr	Oct.	Nov.	Dec.	Dec. qtr	Oct.	Nov.	Dec.	Dec. qtr
<b>RICHMOND — TWEED STATISTICAL DIVISION</b>											
18,950	13,612	16,020	48,582	13,013	9,585	10,910	33,508	501	401	485	1,388
17,112	14,025	17,630	48,767	8,184	6,783	7,307	22,274	545	444	632	1,620
2,135	1,817	1,488	5,440	1,317	1,123	873	3,313	75	65	56	196
7,276	5,453	4,780	17,509	5,286	4,443	3,824	13,553	235	215	165	615
22,772	16,575	20,217	59,564	11,789	9,586	10,901	32,276	623	443	560	1,625
1,245	915	1,195	3,355	865	581	727	2,173	26	23	22	71
<i>69,490</i>	<i>52,397</i>	<i>61,330</i>	<i>183,217</i>	<i>40,454</i>	<i>32,101</i>	<i>34,542</i>	<i>107,097</i>	<i>2,006</i>	<i>1,590</i>	<i>1,920</i>	<i>5,516</i>
<b>MID-NORTH COAST STATISTICAL DIVISION</b>											
2,830	2,120	2,296	7,246	1,916	1,356	1,547	4,819	84	61	66	211
70,142	55,104	66,627	191,873	36,017	28,140	32,901	97,058	2,218	1,774	2,152	6,144
13,112	10,019	8,646	31,777	9,616	6,392	7,015	23,023	322	248	211	781
43,227	29,265	39,069	111,561	24,090	17,011	20,712	61,813	1,281	937	1,284	3,503
12,329	7,248	10,334	29,911	8,516	5,393	7,805	21,714	286	176	234	696
5,459	3,659	4,342	13,460	3,183	2,099	2,406	7,688	122	90	101	313
9,020	6,381	7,552	22,953	5,771	4,000	5,190	14,961	201	138	167	506
15,126	10,567	13,428	39,121	12,383	8,907	11,206	32,496	366	271	319	955
2,195	2,288	3,085	7,568	368	387	459	1,214	158	176	278	612
<i>173,440</i>	<i>126,651</i>	<i>155,379</i>	<i>455,470</i>	<i>101,860</i>	<i>73,685</i>	<i>89,241</i>	<i>264,786</i>	<i>5,038</i>	<i>3,871</i>	<i>4,812</i>	<i>13,721</i>
<b>NORTHERN STATISTICAL DIVISION</b>											
14,620	10,136	13,439	38,195	10,953	7,674	10,560	29,187	480	370	411	1,260
1,603	1,147	1,446	4,196	1,439	1,017	1,295	3,751	46	36	47	129
6,521	4,821	5,721	17,063	5,607	4,405	5,335	15,347	184	141	158	483
4,439	2,922	3,411	10,772	3,556	2,369	2,605	8,530	138	92	95	324
3,500	2,335	2,932	8,767	2,650	1,919	2,137	6,706	105	79	86	270
14,470	11,218	13,406	39,094	8,332	6,972	9,080	24,384	350	282	309	940
5,514	4,683	4,844	15,041	4,498	3,597	4,022	12,117	178	161	158	496
25,707	17,959	19,290	62,956	17,286	12,115	14,175	43,576	845	638	619	2,102
4,338	3,579	4,202	12,119	3,823	2,924	3,715	10,462	112	96	109	317
1,098	692	826	2,616	975	606	758	2,339	20	14	14	49
4,717	3,234	3,206	11,157	3,363	2,473	2,472	8,308	112	74	68	254
<i>86,527</i>	<i>62,726</i>	<i>72,723</i>	<i>221,976</i>	<i>62,482</i>	<i>46,071</i>	<i>56,154</i>	<i>164,707</i>	<i>2,569</i>	<i>1,983</i>	<i>2,073</i>	<i>6,625</i>
<b>NORTH WESTERN AND FAR WEST STATISTICAL DIVISIONS</b>											
2,554	1,980	1,406	5,940	2,367	1,838	1,260	5,465	109	68	49	227
1,659	1,522	1,346	4,527	1,161	825	762	2,748	50	49	38	137
10,881	7,392	5,472	23,745	6,195	4,145	3,779	14,119	400	286	192	878
1,110	954	883	2,947	807	683	541	2,031	33	30	26	89
3,666	2,774	2,980	9,420	3,233	2,354	2,373	7,960	120	92	88	300
12,515	6,348	10,590	29,453	10,185	5,440	9,536	25,161	299	161	252	713
1,330	1,440	976	3,746	859	870	717	2,446	31	33	24	88
40,062	25,901	31,441	97,404	28,731	18,657	23,875	71,263	1,209	860	911	2,980
5,862	3,352	4,993	14,207	5,523	3,020	4,630	13,173	127	79	97	303
12,639	8,897	6,776	28,312	8,065	5,269	4,406	17,740	431	336	244	1,011
2,209	1,595	1,820	5,624	1,958	1,306	1,228	4,492	52	41	46	139
4,635	3,295	2,453	10,383	2,658	2,012	1,581	6,251	138	109	78	325
1,975	1,412	1,704	5,091	1,512	1,074	1,211	3,797	54	36	44	134
1,689	1,324	1,034	4,047	1,140	966	814	2,920	44	36	30	111
<i>102,786</i>	<i>68,186</i>	<i>73,874</i>	<i>244,846</i>	<i>74,394</i>	<i>48,459</i>	<i>56,713</i>	<i>179,566</i>	<i>3,098</i>	<i>2,216</i>	<i>2,121</i>	<i>7,435</i>

TABLE 8 — HOTELS, MOTELS AND GUEST HOUSES WITH FACILITIES: STATISTICAL DIVISIONS

Statistical Divisions and selected Statistical Local Areas	Establish- ments	Guest rooms	Bed spaces	Employ- ment (persons)	Room nights occupied				Room occupancy rates (per cent)			
					Oct.	Nov.	Dec.	Dec. qtr	Oct.	Nov.	Dec.	Dec. qtr
<b>CENTRAL WEST STATISTICAL DIVISION</b>												
Bathurst (C)	13	384	1,148	167	7,649	6,719	4,584	18,952	64.3	58.3	38.5	53.6
Bland (S)	13	276	894	72	3,796	3,057	3,199	10,052	44.4	36.9	37.4	39.6
Cabonne (S) Parts A, B & C	3	36	118	8	440	506	281	1,227	39.4	46.9	25.2	37.0
Cowra (S)	9	176	496	99	3,393	3,282	2,407	9,082	62.2	62.2	44.1	56.1
Forbes (S)	7	155	433	48	2,908	2,011	2,049	6,968	60.5	43.2	42.6	48.9
Lachlan (S)	5	69	178	20	810	616	537	1,963	37.9	29.8	25.1	30.9
Lithgow, Greater (C)	6	147	448	77	2,722	2,398	1,891	7,011	59.7	54.4	41.5	51.8
Oberon (S)	6	119	402	114	1,913	1,358	1,085	4,356	51.9	38.0	29.4	39.8
Orange (C)	11	425	1,205	226	8,869	8,522	5,375	22,766	67.3	66.8	40.8	58.2
Parkes (S)	14	278	857	94	5,849	5,148	4,628	15,625	67.9	61.7	53.7	61.1
Balance	4	59	221	24	988	934	540	2,462	54.0	52.8	29.5	45.4
<i>Central West (SD)</i>	<i>91</i>	<i>2,124</i>	<i>6,400</i>	<i>949</i>	<i>39,337</i>	<i>34,551</i>	<i>26,576</i>	<i>100,464</i>	<i>59.7</i>	<i>54.2</i>	<i>40.4</i>	<i>51.4</i>
<b>SOUTH EASTERN STATISTICAL DIVISION</b>												
Bega Valley (S)	42	835	2,590	268	13,189	11,134	10,722	35,045	51.0	44.4	41.4	45.6
Cooma — Monaro (S)	15	367	1,119	87	4,270	3,802	3,074	11,146	37.5	34.5	27.0	33.0
Eurobodalla (S)	39	781	2,446	273	10,977	9,543	10,318	30,838	45.3	40.7	42.6	42.9
Goulburn (C)	14	382	1,023	142	6,809	5,040	4,308	16,157	57.5	44.0	36.4	46.0
Queanbeyan (C)	17	512	1,499	151	11,081	8,859	6,669	26,609	69.8	57.7	42.0	56.5
Snowy River (S) (b)	61	1,753	7,063	313	3,878	2,386	4,203	10,467	7.2	5.4	8.7	7.1
Tallaganda (S)	4	41	134	15	470	391	427	1,288	37.0	31.8	33.6	34.1
Yass (S)	9	197	592	78	3,240	3,036	2,903	9,179	53.1	51.4	47.5	50.6
Young (S)	6	108	295	40	1,933	2,271	1,504	5,708	57.7	70.1	44.9	57.4
Balance	14	330	1,072	135	5,462	4,376	3,381	13,219	53.4	44.2	33.5	43.7
<i>South Eastern (SD)</i>	<i>221</i>	<i>5,306</i>	<i>17,833</i>	<i>1,502</i>	<i>61,309</i>	<i>50,838</i>	<i>47,509</i>	<i>159,656</i>	<i>37.4</i>	<i>33.7</i>	<i>30.0</i>	<i>33.7</i>
<b>MURRUMBIDGEE STATISTICAL DIVISION</b>												
Carrathool (S)	3	34	106	7	305	259	323	887	28.9	25.4	30.6	28.4
Cootamundra (S)	4	79	215	32	1,274	1,367	816	3,457	52.0	57.7	33.3	47.6
Griffith (C)	9	257	731	84	4,317	4,359	3,087	11,763	54.2	56.5	38.7	49.8
Gundagai (S)	5	106	334	34	2,074	2,023	2,016	6,113	63.1	63.6	61.4	62.7
Hay (S)	7	146	433	43	2,474	2,040	2,449	6,963	54.7	46.6	54.1	51.8
Lecton (S)	4	113	318	36	1,708	1,592	1,322	4,622	48.8	47.0	37.7	44.5
Narrandera (S)	11	241	754	69	3,554	2,404	2,707	8,665	47.6	33.3	36.2	39.1
Temora (S)	4	47	114	21	947	886	570	2,403	65.0	62.8	39.1	55.6
Tumut (S)	9	181	585	62	2,824	2,479	2,026	7,329	50.3	45.7	36.1	44.0
Wagga Wagga (C)	26	756	2,218	307	14,640	13,010	10,526	38,176	62.5	57.4	44.9	54.9
Balance	7	77	219	24	750	624	644	2,018	31.4	27.0	27.0	28.5
<i>Murrumbidgee (SD)</i>	<i>89</i>	<i>2,037</i>	<i>6,027</i>	<i>719</i>	<i>34,867</i>	<i>31,043</i>	<i>26,486</i>	<i>92,396</i>	<i>55.2</i>	<i>50.8</i>	<i>41.9</i>	<i>49.3</i>
<b>MURRAY STATISTICAL DIVISION</b>												
Albury (C)	40	1,382	4,110	520	26,489	21,841	17,849	66,179	61.8	52.7	41.7	52.1
Balranald (S)	7	103	338	23	1,423	1,043	1,321	3,787	44.6	33.8	41.4	40.0
Berrigan (S)	24	446	1,394	126	7,218	5,697	4,774	17,689	52.2	42.6	34.5	43.1
Corowa (S)	23	458	1,554	137	7,305	6,561	5,902	19,768	51.5	47.8	41.6	46.9
Deniliquin (M)	11	210	647	57	3,313	2,906	1,972	8,191	50.9	46.1	30.3	42.4
Holbrook (S)	7	110	340	33	1,620	1,177	1,631	4,428	47.5	35.7	47.8	43.8
Hume (S)	4	88	280	61	1,132	905	778	2,815	41.5	34.3	28.5	34.8
Jerilderie (S)	5	53	154	24	605	496	613	1,714	36.8	31.2	37.3	35.2
Murray (S)	10	278	1,056	120	4,947	4,523	4,128	13,598	57.4	54.2	47.9	53.2
Wakool (S)	11	203	611	49	3,341	2,876	2,113	8,330	53.1	47.2	33.6	44.6
Wentworth (S)	10	209	641	59	4,218	3,437	2,611	10,266	65.1	54.8	40.3	53.4
Balance	3	54	143	27	778	644	636	2,058	46.5	39.8	38.0	41.4
<i>Murray (SD)</i>	<i>155</i>	<i>3,594</i>	<i>11,268</i>	<i>1,236</i>	<i>62,389</i>	<i>52,106</i>	<i>44,328</i>	<i>158,823</i>	<i>56.0</i>	<i>48.3</i>	<i>39.8</i>	<i>48.0</i>
<b>NEW SOUTH WALES</b>												
<i>NEW SOUTH WALES</i>	<i>1,726</i>	<i>56,901</i>	<i>164,763</i>	<i>30,566</i>	<i>1,044,249</i>	<i>957,458</i>	<i>870,060</i>	<i>2,871,767</i>	<i>59.2</i>	<i>56.5</i>	<i>49.6</i>	<i>55.1</i>

(a) Statistical Local Areas are not shown separately in this table when data for them are confidential or nil. Data for these are aggregated and shown as the Balance of the particular Statistical Division. (b) Snow field resorts are included continuously as capacity (potentially) available irrespective of any off-season closures. The average occupancy rates of establishments in Snowy River (S) actually remaining open during the snow fields off season, therefore, are significantly higher than the overall rates published.

## AND SELECTED STATISTICAL LOCAL AREAS (a), NEW SOUTH WALES, DECEMBER QUARTER 1993 —continued

Guest nights			Guest arrivals				Takings from accommodation (\$'000)				
Oct.	Nov.	Dec.	Dec. qtr	Oct.	Nov.	Dec.	Dec. qtr	Oct.	Nov.	Dec.	Dec. qtr
CENTRAL WEST STATISTICAL DIVISION											
13,350	10,945	7,700	31,995	8,343	7,643	5,376	21,362	585	446	315	1,345
7,780	5,361	6,899	20,040	7,204	4,758	6,380	18,342	203	150	170	523
862	952	542	2,356	586	533	249	1,368	24	33	15	72
6,235	5,679	4,255	16,169	5,063	4,065	3,355	12,483	183	171	128	482
5,114	3,183	3,594	11,891	4,479	2,901	3,320	10,700	168	114	117	399
1,350	894	1,076	3,320	985	638	640	2,263	35	27	26	88
4,596	4,018	2,865	11,479	2,653	2,400	2,064	7,117	150	140	109	399
4,569	2,947	2,397	9,913	2,288	1,562	1,219	5,069	165	103	84	352
14,188	12,896	8,246	35,330	8,273	8,128	5,966	22,367	538	504	318	1,361
10,855	7,713	8,315	26,883	7,170	4,807	6,152	18,129	289	228	226	743
2,250	1,833	898	4,981	1,189	854	610	2,653	46	43	25	113
<i>71,149</i>	<i>56,421</i>	<i>46,787</i>	<i>174,357</i>	<i>48,233</i>	<i>38,289</i>	<i>35,331</i>	<i>121,853</i>	<i>2,386</i>	<i>1,959</i>	<i>1,534</i>	<i>5,878</i>
SOUTH EASTERN STATISTICAL DIVISION											
24,385	19,945	21,568	65,898	14,654	11,243	12,709	38,606	649	540	650	1,838
7,644	6,291	5,147	19,082	5,017	4,329	3,751	13,097	213	191	142	546
19,998	17,262	20,448	57,708	12,968	10,877	12,432	36,277	581	522	620	1,723
12,337	9,088	8,031	29,456	9,344	6,545	6,166	22,055	366	281	243	890
19,113	14,082	11,340	44,535	10,333	8,043	6,695	25,071	599	474	377	1,450
9,324	5,394	10,207	24,925	3,875	3,168	4,991	12,034	302	166	324	792
998	751	874	2,623	846	578	736	2,160	24	20	22	67
6,106	4,954	5,281	16,341	5,064	3,882	4,655	13,601	192	174	172	539
3,427	3,873	2,573	9,873	2,547	2,464	1,911	6,922	110	142	81	333
11,697	8,742	7,661	28,100	9,484	7,232	6,931	23,647	313	240	197	750
<i>115,029</i>	<i>90,382</i>	<i>93,130</i>	<i>298,541</i>	<i>74,132</i>	<i>58,361</i>	<i>60,977</i>	<i>193,470</i>	<i>3,349</i>	<i>2,749</i>	<i>2,828</i>	<i>8,927</i>
MURRUMBIDGEE STATISTICAL DIVISION											
474	414	505	1,393	327	304	387	1,018	12	10	12	35
2,231	2,361	1,453	6,045	1,703	1,614	1,204	4,521	75	77	51	203
6,394	6,000	4,543	16,937	3,937	3,657	2,792	10,386	235	232	162	629
4,225	4,035	4,198	12,458	3,528	2,984	3,571	10,083	105	97	99	302
4,854	3,663	5,045	13,562	4,496	3,324	4,712	12,532	135	113	135	383
2,737	2,208	2,039	6,984	1,776	1,519	1,190	4,485	79	74	63	215
7,025	4,110	5,408	16,543	6,135	3,586	4,700	14,421	177	112	135	425
1,746	1,561	1,081	4,388	845	631	604	2,080	39	34	24	97
4,882	3,885	3,428	12,195	3,105	2,707	2,350	8,162	151	120	94	366
24,127	19,878	16,709	60,714	15,717	13,303	11,372	40,392	938	821	675	2,433
1,447	1,111	1,191	3,749	1,039	847	885	2,771	36	27	30	93
<i>60,142</i>	<i>49,226</i>	<i>45,600</i>	<i>154,968</i>	<i>42,608</i>	<i>34,476</i>	<i>33,767</i>	<i>110,851</i>	<i>1,982</i>	<i>1,717</i>	<i>1,482</i>	<i>5,181</i>
MURRAY STATISTICAL DIVISION											
45,063	35,521	32,597	113,181	27,503	22,918	20,128	70,549	1,570	1,329	1,150	4,049
2,821	1,968	2,601	7,390	2,275	1,500	2,268	6,043	73	52	70	195
14,215	11,111	9,388	34,714	7,655	6,123	5,301	19,079	361	288	244	893
14,835	13,182	12,571	40,588	8,228	6,943	5,847	21,018	410	390	302	1,102
5,833	4,882	3,310	14,025	4,628	3,462	2,324	10,414	163	140	102	405
3,140	2,242	3,435	8,817	2,748	2,048	3,262	8,058	75	56	74	205
2,498	2,015	1,740	6,253	1,585	1,127	965	3,677	65	52	44	161
1,168	894	1,179	3,241	1,031	797	943	2,771	26	21	26	72
10,698	9,847	9,621	30,166	6,070	5,594	4,980	16,644	374	336	323	1,032
6,639	5,628	4,125	16,392	4,164	3,607	2,780	10,551	171	151	105	427
8,002	6,158	5,092	19,252	3,951	2,989	2,748	9,688	179	136	110	425
1,191	880	1,048	3,119	888	576	786	2,250	37	29	30	97
<i>116,103</i>	<i>94,328</i>	<i>86,707</i>	<i>297,138</i>	<i>70,726</i>	<i>57,684</i>	<i>52,332</i>	<i>180,742</i>	<i>3,504</i>	<i>2,980</i>	<i>2,580</i>	<i>9,064</i>
NEW SOUTH WALES											
<i>1,875,963</i>	<i>1,623,968</i>	<i>1,622,643</i>	<i>5,122,574</i>	<i>1,016,190</i>	<i>864,117</i>	<i>876,887</i>	<i>2,757,194</i>	<i>87,119</i>	<i>82,068</i>	<i>74,374</i>	<i>243,561</i>

TABLE 9 — HOLIDAY FLATS, UNITS AND HOUSES BY STATISTICAL DIVISION,  
NEW SOUTH WALES

Particulars	Sydney (SD)			Hunter (SD)			Illawarra (SD)			Richmond - Tweed (SD)		
	Real estate agents	Other letting entities	Total	Real estate agents	Other letting entities	Total	Real estate agents	Other letting entities	Total	Real estate agents	Other letting entities	Total
LETTING ENTITIES, CAPACITY AND EMPLOYMENT												
<i>December quarter 1992—</i>												
Letting entities	17	46	63	20	11	31	11	14	25	23	23	46
Flats, units and houses												
Single bedroom	74	804	878	90	13	103	27	51	78	37	54	91
Multiple bedroom	898	458	1,356	1,701	89	1,790	339	90	429	592	207	799
<i>Total flats, units and houses</i>	<i>972</i>	<i>1,262</i>	<i>2,234</i>	<i>1,791</i>	<i>102</i>	<i>1,893</i>	<i>366</i>	<i>141</i>	<i>507</i>	<i>629</i>	<i>261</i>	<i>890</i>
Bed spaces	5,288	4,392	9,680	8,629	496	9,125	1,937	736	2,673	2,994	1,173	4,167
Employment (persons) (a)	(a)	258	258	(a)	27	27	(a)	36	36	(a)	80	80
<i>December quarter 1993—</i>												
Letting entities	18	45	63	22	11	33	14	15	29	22	23	45
Flats, units and houses												
Single bedroom	80	791	871	85	13	98	21	54	75	30	56	86
Multiple bedroom	927	390	1,317	1,766	78	1,844	525	83	608	588	213	801
<i>Total flats, units and houses</i>	<i>1,007</i>	<i>1,181</i>	<i>2,188</i>	<i>1,851</i>	<i>91</i>	<i>1,942</i>	<i>546</i>	<i>137</i>	<i>683</i>	<i>618</i>	<i>269</i>	<i>887</i>
Bed spaces	5,390	4,121	9,511	9,063	442	9,505	2,967	669	3,636	3,138	1,204	4,342
Employment (persons) (a)	(a)	258	258	(a)	26	26	(a)	42	42	(a)	80	80
UNIT NIGHTS OCCUPIED ('000)												
<i>December quarter 1992</i>	<i>22.9</i>	<i>71.6</i>	<i>94.5</i>	<i>64.6</i>	<i>4.5</i>	<i>69.1</i>	<i>5.6</i>	<i>6.0</i>	<i>11.6</i>	<i>30.0</i>	<i>15.5</i>	<i>45.6</i>
<i>1993—</i>												
October	7.6	24.8	32.4	18.1	1.4	19.5	3.1	1.6	4.6	9.4	5.6	15.1
November	4.7	24.0	28.7	16.9	1.3	18.2	3.3	1.4	4.7	9.2	4.9	14.1
December	10.1	24.1	34.2	26.1	1.4	27.4	6.1	1.9	8.0	10.4	5.3	15.7
<i>December quarter 1993</i>	<i>22.5</i>	<i>72.9</i>	<i>95.3</i>	<i>61.1</i>	<i>4.1</i>	<i>65.1</i>	<i>12.4</i>	<i>4.9</i>	<i>17.3</i>	<i>29.1</i>	<i>15.8</i>	<i>44.9</i>
UNIT OCCUPANCY RATES (per cent)												
<i>December quarter 1992</i>	<i>25.6</i>	<i>61.7</i>	<i>46.0</i>	<i>39.2</i>	<i>48.0</i>	<i>39.7</i>	<i>16.6</i>	<i>46.1</i>	<i>24.8</i>	<i>51.9</i>	<i>64.7</i>	<i>55.6</i>
<i>1993—</i>												
October	24.4	67.8	47.8	31.7	50.6	32.6	18.0	36.7	21.8	49.3	67.5	54.8
November	15.6	67.6	43.7	30.7	47.7	31.5	20.3	34.2	23.1	49.5	60.9	53.0
December	32.5	65.9	50.5	45.8	48.1	45.9	35.9	45.0	37.7	54.5	63.2	57.2
<i>December quarter 1993</i>	<i>24.3</i>	<i>67.1</i>	<i>47.4</i>	<i>36.1</i>	<i>48.8</i>	<i>36.7</i>	<i>24.8</i>	<i>38.7</i>	<i>27.6</i>	<i>51.1</i>	<i>63.9</i>	<i>55.0</i>
UNIT LETTINGS ('000)												
<i>December quarter 1992</i>	<i>2.9</i>	<i>15.3</i>	<i>18.2</i>	<i>8.3</i>	<i>1.1</i>	<i>9.4</i>	<i>0.9</i>	<i>1.2</i>	<i>2.2</i>	<i>3.5</i>	<i>2.3</i>	<i>5.8</i>
<i>1993—</i>												
October	1.1	6.1	7.2	2.7	0.4	3.1	0.6	0.4	1.0	1.1	0.9	2.0
November	0.8	6.0	6.8	2.5	0.4	2.8	0.7	0.4	1.1	1.1	0.8	1.9
December	1.7	6.3	8.0	3.6	0.3	3.9	1.0	0.4	1.5	1.1	0.8	1.9
<i>December quarter 1993</i>	<i>3.5</i>	<i>18.5</i>	<i>22.0</i>	<i>8.8</i>	<i>1.0</i>	<i>9.8</i>	<i>2.3</i>	<i>1.3</i>	<i>3.5</i>	<i>3.3</i>	<i>2.5</i>	<i>5.8</i>
AVERAGE LENGTH OF STAY (days)												
<i>December quarter 1992</i>	<i>7.9</i>	<i>4.7</i>	<i>5.2</i>	<i>7.7</i>	<i>4.1</i>	<i>7.3</i>	<i>5.9</i>	<i>4.9</i>	<i>5.3</i>	<i>8.7</i>	<i>6.6</i>	<i>7.9</i>
<i>1993—</i>												
October	7.2	4.0	4.5	6.6	3.7	6.2	5.4	3.5	4.6	8.4	6.4	7.5
November	6.0	4.0	4.2	6.9	3.6	6.4	5.0	3.6	4.5	8.5	6.1	7.5
December	6.1	3.8	4.3	7.3	4.4	7.0	5.9	4.3	5.4	9.3	6.4	8.1
<i>December quarter 1993</i>	<i>6.4</i>	<i>3.9</i>	<i>4.3</i>	<i>6.9</i>	<i>3.9</i>	<i>6.6</i>	<i>5.5</i>	<i>3.8</i>	<i>4.9</i>	<i>8.8</i>	<i>6.3</i>	<i>7.7</i>
TAKINGS FROM ACCOMMODATION (\$'000)												
<i>December quarter 1992</i>	<i>1,468</i>	<i>6,546</i>	<i>8,013</i>	<i>3,185</i>	<i>301</i>	<i>3,486</i>	<i>338</i>	<i>307</i>	<i>645</i>	<i>1,293</i>	<i>915</i>	<i>2,208</i>
<i>1993—</i>												
October	347	2,189	2,535	817	101	918	230	93	323	386	332	719
November	258	2,185	2,442	679	97	775	285	87	372	338	277	615
December	1,044	2,339	3,384	1,578	100	1,677	552	119	671	521	377	898
<i>December quarter 1993</i>	<i>1,649</i>	<i>6,713</i>	<i>8,361</i>	<i>3,073</i>	<i>298</i>	<i>3,371</i>	<i>1,067</i>	<i>299</i>	<i>1,366</i>	<i>1,245</i>	<i>987</i>	<i>2,232</i>

For footnotes see end of table.

TABLE 9 — HOLIDAY FLATS, UNITS AND HOUSES BY STATISTICAL DIVISION,  
NEW SOUTH WALES—continued

Particulars	Mid - North Coast (SD)			South Eastern (SD)			Murray (SD)	Balance	New South Wales		
	Real estate agents	Other letting entities	Total	Real estate agents	Other letting entities	Total	Total	Total	Real estate agents	Other letting entities	Total
LETTING ENTITIES, CAPACITY AND EMPLOYMENT											
December quarter 1992—											
Letting entities	26	69	95	23	97	120	19	8	120	287	407
Flats, units and houses											
Single bedroom	87	259	346	84	241	325	103	46	399	1,571	1,970
Multiple bedroom	1,140	426	1,566	1,446	771	2,217	87	23	6,116	2,151	8,267
Total flats, units and houses	1,227	685	1,912	1,530	1,012	2,542	190	69	6,515	3,722	10,237
Bed spaces	5,368	2,876	8,244	7,678	4,439	12,117	730	258	31,894	15,100	46,994
Employment (persons) (a)	(a)	211	211	(a)	310	310	161	18	(a)	1,101	1,101
December quarter 1993—											
Letting entities	26	66	92	23	97	120	18	9	125	284	409
Flats, units and houses											
Single bedroom	92	269	361	87	232	319	104	69	395	1,588	1,983
Multiple bedroom	1,132	416	1,548	1,442	793	2,235	84	20	6,380	2,077	8,457
Total flats, units and houses	1,224	685	1,909	1,529	1,025	2,554	188	89	6,775	3,665	10,440
Bed spaces	5,290	2,878	8,168	8,066	4,509	12,575	762	318	33,914	14,903	48,817
Employment (persons) (a)	(a)	206	206	(a)	311	311	161	21	(a)	1,105	1,105
UNIT NIGHTS OCCUPIED ('000)											
December quarter 1992	49.9	35.7	85.6	30.3	43.8	74.1	10.9	3.1	203.2	191.2	394.3
1993—											
October	17.8	13.1	30.9	7.5	15.1	22.6	4.0	1.7	63.5	67.2	130.7
November	16.1	11.2	27.4	6.3	13.3	19.6	3.6	1.1	56.6	60.8	117.4
December	18.5	11.1	29.6	11.1	14.5	25.6	2.9	1.2	82.3	62.4	144.7
December quarter 1993	52.5	35.4	87.9	24.9	42.9	67.8	10.5	3.9	202.4	190.4	392.8
UNIT OCCUPANCY RATES (per cent)											
December quarter 1992	44.2	56.8	48.7	21.5	47.0	31.7	62.4	48.2	33.9	55.8	41.9
1993—											
October	47.0	61.5	52.2	15.8	47.8	28.6	68.2	59.9	30.3	59.3	40.5
November	44.0	54.6	47.8	13.8	43.6	25.7	63.8	39.5	27.9	55.4	37.6
December	48.7	52.4	50.0	23.4	45.9	32.4	50.5	42.2	39.3	55.0	44.8
December quarter 1993	46.6	56.2	50.0	17.7	45.8	28.9	60.8	47.3	32.5	56.6	41.0
UNIT LETTINGS ('000)											
December quarter 1992	5.2	6.8	12.0	4.2	9.0	13.2	3.1	1.9	25.0	40.8	65.9
1993—											
October	1.8	2.7	4.5	1.0	3.3	4.3	1.1	0.8	8.3	15.7	24.0
November	1.7	2.2	3.9	0.8	2.7	3.5	1.0	0.5	7.5	14.0	21.5
December	2.0	2.1	4.0	1.5	2.9	4.4	0.9	0.6	10.8	14.4	25.2
December quarter 1993	5.5	7.0	12.5	3.3	8.9	12.2	3.0	1.8	26.7	44.1	70.7
AVERAGE LENGTH OF STAY (days)											
December quarter 1992	9.6	5.3	7.2	7.2	4.9	5.6	3.5	1.6	8.1	4.7	6.0
1993—											
October	9.7	4.9	6.8	7.5	4.6	5.3	3.5	2.2	7.6	4.3	5.4
November	9.5	5.1	7.0	7.6	4.9	5.5	3.5	2.3	7.5	4.4	5.5
December	9.5	5.3	7.3	7.6	5.0	5.9	3.3	1.9	7.6	4.3	5.7
December quarter 1993	9.6	5.1	7.0	7.6	4.8	5.6	3.4	2.1	7.6	4.3	5.6
TAKINGS FROM ACCOMMODATION (\$'000)											
December quarter 1992	2,038	1,801	3,839	1,622	2,061	3,683	517	148	9,945	12,596	22,541
1993—											
October	647	634	1,281	312	646	958	193	77	2,739	4,266	7,005
November	552	522	1,074	290	575	865	172	44	2,401	3,958	6,359
December	1,005	696	1,701	646	905	1,551	152	51	5,346	4,739	10,085
December quarter 1993	2,204	1,852	4,056	1,249	2,126	3,375	517	172	10,486	12,963	23,450

(a) Employment numbers exclude real estate agents and their employees.

TABLE 10 — HOLIDAY FLATS, UNITS AND HOUSES: SELECTED STATISTICAL DIVISIONS

Statistical Divisions and Selected Statistical Local Areas	Flats, units and houses				Bed spaces	Employ- ment (persons) (b)	Unit nights occupied			
	Letting entities	Single bedroom	Multiple bedroom	Total			Oct.	Nov.	Dec.	Dec. qtr
Blue Mountains (C)	9	27	166	193	1,112	23	2,738	1,531	2,574	6,843
Gosford (C)	10	23	538	561	3,029	2	1,892	1,760	4,840	8,492
Manly (M)	4	46	73	119	449	21	2,673	2,606	2,960	8,239
South Sydney (C)	8	258	51	309	893	86	6,161	6,245	5,904	18,310
Sydney (C)	8	205	30	235	689	38	5,077	4,715	4,279	14,071
Wyong (S)	11	60	286	346	1,718	21	4,886	3,014	4,408	12,308
Balance	13	252	173	425	1,621	67	9,010	8,800	9,276	27,086
<i>Sydney (SD)</i>	<i>63</i>	<i>871</i>	<i>1,317</i>	<i>2,188</i>	<i>9,511</i>	<i>258</i>	<i>32,437</i>	<i>28,671</i>	<i>34,241</i>	<i>95,349</i>
Cessnock (C) and Newcastle (C)	5	3	39	42	222	12	750	625	519	1,894
Great Lakes (S)	20	53	1,050	1,103	5,285	14	12,646	12,394	17,041	42,081
Port Stephens (S)	8	42	755	797	3,998	—	6,089	5,201	9,878	21,168
<i>Hunter (SD)</i>	<i>33</i>	<i>98</i>	<i>1,844</i>	<i>1,942</i>	<i>9,505</i>	<i>26</i>	<i>19,485</i>	<i>18,220</i>	<i>27,438</i>	<i>65,143</i>
<i>Illawarra (SD)</i>	<i>29</i>	<i>75</i>	<i>608</i>	<i>683</i>	<i>3,636</i>	<i>42</i>	<i>4,609</i>	<i>4,727</i>	<i>7,986</i>	<i>17,322</i>
Ballina (S) and Richmond River (S)	12	15	263	278	1,276	17	4,625	4,394	4,698	13,717
Byron (S)	17	34	334	368	1,986	34	7,646	7,279	7,285	22,210
Tweed (S) Parts A & B	16	37	204	241	1,080	29	2,806	2,420	3,733	8,959
<i>Richmond — Tweed (SD)</i>	<i>45</i>	<i>86</i>	<i>801</i>	<i>887</i>	<i>4,342</i>	<i>80</i>	<i>15,077</i>	<i>14,093</i>	<i>15,716</i>	<i>44,886</i>
Coffs Harbour (C)	29	71	345	416	1,743	85	8,339	6,743	6,187	21,269
Greater Taree (C)	4	29	—	29	114	9	98	112	180	390
Hastings (M)	26	86	571	657	2,815	49	12,831	10,331	11,221	34,383
Kempsey (S)	14	68	267	335	1,606	20	4,640	4,608	5,588	14,836
Maclean (S)	7	22	318	340	1,393	2	2,870	2,972	4,052	9,894
Nambucca (S)	4	11	27	38	153	6	533	392	456	1,381
Balance	8	74	20	94	344	35	1,586	2,204	1,929	5,719
<i>Mid-North Coast (SD)</i>	<i>92</i>	<i>361</i>	<i>1,548</i>	<i>1,909</i>	<i>8,168</i>	<i>206</i>	<i>30,897</i>	<i>27,362</i>	<i>29,613</i>	<i>87,872</i>
Bega Valley (S)	65	68	1,060	1,128	5,182	155	14,526	12,498	14,936	41,960
Eurobodalla (S)	35	110	774	884	4,321	60	5,440	5,010	7,534	17,984
Balance	20	141	401	542	3,072	96	2,627	2,120	3,137	7,884
<i>South Eastern (SD)</i>	<i>120</i>	<i>319</i>	<i>2,235</i>	<i>2,554</i>	<i>12,575</i>	<i>311</i>	<i>22,593</i>	<i>19,628</i>	<i>25,607</i>	<i>67,828</i>
Berrigan (S)	3	25	11	36	127	5	800	584	467	1,851
Corowa (S)	7	72	24	96	373	133	2,114	2,082	1,692	5,888
Murray (S), Wakool (S) and Wentworth (S)	8	7	49	56	262	23	1,059	932	784	2,775
<i>Murray (SD)</i>	<i>18</i>	<i>104</i>	<i>84</i>	<i>188</i>	<i>762</i>	<i>161</i>	<i>3,973</i>	<i>3,598</i>	<i>2,943</i>	<i>10,514</i>
Balance of State	9	69	20	89	318	21	1,652	1,055	1,163	3,870
<b>NEW SOUTH WALES</b>	<b>409</b>	<b>1,983</b>	<b>8,457</b>	<b>10,440</b>	<b>48,817</b>	<b>1,105</b>	<b>130,723</b>	<b>117,354</b>	<b>144,707</b>	<b>392,784</b>

(a) Statistical Local Areas are not shown separately in this table when data for them are confidential or nil. Data for these are aggregated and shown as the Balance of the particular Statistical Division. Likewise, data for Statistical Divisions not specifically identified are nil or included in Balance of State. (b) Employment numbers exclude real estate agents and their employees.

## AND STATISTICAL LOCAL AREAS (a), NEW SOUTH WALES, DECEMBER QUARTER 1993

Unit occupancy rates (per cent)				Unit lettings				Average length of stay (days)	Takings from accommodation (\$'000)			
Oct.	Nov.	Dec.	Dec. qtr	Oct.	Nov.	Dec.	Dec. qtr	Dec. qtr	Oct.	Nov.	Dec.	Dec. qtr
45.8	26.4	43.0	38.5	861	545	890	2,296	3.0	164	100	169	433
10.9	10.5	27.8	16.5	362	375	713	1,450	5.9	99	98	554	751
72.5	73.0	80.2	75.3	571	524	642	1,737	4.7	272	265	356	893
64.3	67.4	61.6	64.4	1,447	1,551	1,544	4,542	4.0	517	576	539	1,632
69.7	66.9	58.7	65.1	1,017	970	1,005	2,992	4.7	421	407	407	1,234
45.6	29.0	41.1	38.7	788	802	869	2,459	5.0	201	147	322	670
68.4	69.0	70.4	69.3	2,164	2,012	2,322	6,498	4.2	862	850	1,036	2,748
47.8	43.7	50.5	47.4	7,210	6,779	7,985	21,974	4.3	2,535	2,442	3,384	8,361
57.6	49.6	39.9	49.0	259	236	179	674	2.8	76	68	50	195
37.5	38.0	50.5	42.0	1,951	1,805	2,322	6,078	6.9	480	421	898	1,799
24.6	21.8	40.0	28.9	916	786	1,396	3,098	6.8	362	286	729	1,377
32.6	31.5	45.9	36.7	3,126	2,827	3,897	9,850	6.6	918	775	1,677	3,371
21.8	23.1	37.7	27.6	1,011	1,052	1,477	3,540	4.9	323	372	671	1,366
53.7	52.7	54.5	53.6	573	525	545	1,643	8.3	145	114	225	484
67.0	65.9	63.9	65.6	1,124	1,079	1,004	3,207	6.9	454	417	486	1,357
37.6	33.5	50.0	40.4	311	281	397	989	9.1	120	83	188	391
54.8	53.0	57.2	55.0	2,008	1,885	1,946	5,839	7.7	719	615	898	2,232
64.7	54.0	48.0	55.6	1,658	1,363	1,196	4,217	5.0	389	303	401	1,093
10.9	12.9	20.0	14.6	25	25	38	88	4.4	4	4	9	17
63.0	52.4	55.1	56.9	1,382	1,087	1,265	3,734	9.2	460	367	720	1,547
44.7	45.9	53.8	48.1	710	650	679	2,039	7.3	186	151	223	560
27.2	29.1	38.4	31.6	374	400	507	1,281	7.7	109	106	169	384
45.2	34.4	38.7	39.5	82	71	68	221	6.2	23	16	23	61
54.4	78.2	66.2	66.1	284	312	295	891	6.4	110	128	156	394
52.2	47.8	50.0	50.0	4,515	3,908	4,048	12,471	7.0	1,281	1,074	1,701	4,056
41.5	36.9	42.7	40.4	2,235	1,908	2,177	6,320	6.6	587	516	865	1,968
19.9	18.9	27.5	22.1	1,284	1,076	1,394	3,754	4.8	211	212	455	877
15.8	13.2	18.8	16.0	737	562	804	2,103	3.7	161	137	232	530
28.6	25.7	32.4	28.9	4,256	3,546	4,375	12,177	5.6	958	865	1,551	3,375
71.7	54.1	41.8	55.9	193	152	122	467	4.0	32	23	21	76
71.0	72.3	56.9	66.7	614	583	545	1,742	3.4	100	96	84	279
61.0	55.5	45.2	53.9	323	285	231	839	3.3	62	53	47	162
68.2	63.8	50.5	60.8	1,130	1,020	898	3,048	3.4	193	172	152	517
59.9	39.5	42.2	47.3	767	464	617	1,848	2.1	77	44	51	172
40.5	37.6	44.8	41.0	24,023	21,481	25,243	70,747	5.6	7,005	6,359	10,085	23,450

TABLE 11 — CARAVAN PARKS: STATISTICAL DIVISIONS AND SELECTED

Statistical Divisions and Selected Statistical Local Areas	Establish- ments	Capacity				Total	Sites occupied by long-term guests	Other sites perman- ently reserved	Employ- ment (persons)
		On-site vans	Other powered sites	Unpow- ered sites	Cabins, flats etc.				
Baulkham Hills (S)	10	39	593	128	—	760	39	259	21
Camden (M)	3	34	411	10	—	455	293	—	12
Gosford (C)	12	54	1,581	205	41	1,881	544	561	49
Hawkesbury (C)	8	76	590	296	10	972	81	180	29
Sutherland (S)	6	91	237	5	55	388	226	6	20
Wyong (S)	33	369	4,064	431	146	5,010	1,026	2,139	145
Balance	21	594	1,831	180	206	2,811	1,274	11	132
<i>Sydney (SD)</i>	<i>93</i>	<i>1,257</i>	<i>9,307</i>	<i>1,255</i>	<i>458</i>	<i>12,277</i>	<i>3,483</i>	<i>3,156</i>	<i>408</i>
Cessnock (C)	4	51	156	36	18	261	104	5	14
Great Lakes (S)	26	191	2,996	701	215	4,103	515	1,554	128
Lake Macquarie (C)	18	179	1,890	229	63	2,361	1,055	347	82
Muswellbrook (S)	4	74	153	28	12	267	109	11	12
Port Stephens (S)	19	128	2,630	290	106	3,154	519	1,373	94
Scone (S)	3	28	67	32	10	137	12	23	14
Singleton (S)	3	26	128	4	10	168	56	—	8
Balance	12	86	524	452	24	1,086	91	206	34
<i>Hunter (SD)</i>	<i>89</i>	<i>763</i>	<i>8,544</i>	<i>1,772</i>	<i>458</i>	<i>11,537</i>	<i>2,461</i>	<i>3,519</i>	<i>386</i>
Kiama (M)	7	102	1,471	342	16	1,931	28	1,114	34
Shellharbour (M)	3	50	557	240	8	855	151	207	13
Shoalhaven (C) & Wingecarribee (S)	75	443	7,589	2,079	348	10,459	687	5,774	268
Wollongong (C)	8	78	1,470	300	118	1,966	476	722	46
<i>Illawarra (SD)</i>	<i>93</i>	<i>673</i>	<i>11,087</i>	<i>2,961</i>	<i>490</i>	<i>15,211</i>	<i>1,342</i>	<i>7,817</i>	<i>361</i>
Ballina (S)	13	107	1,142	296	67	1,612	630	145	44
Byron (S)	12	62	772	712	112	1,658	282	62	34
Lismore (C)	5	104	240	32	63	439	206	—	28
Richmond River (S)	5	35	498	206	19	758	86	112	11
Tweed (S) Pts A & B	30	186	3,182	340	139	3,847	1,494	730	127
Balance	4	16	166	75	6	263	67	—	10
<i>Richmond — Tweed (SD)</i>	<i>69</i>	<i>510</i>	<i>6,000</i>	<i>1,661</i>	<i>406</i>	<i>8,577</i>	<i>2,765</i>	<i>1,049</i>	<i>254</i>
Bellingen (S)	9	61	613	148	25	847	179	120	25
Coffs Harbour (C)	22	290	1,965	933	191	3,379	693	60	112
Hastings (M)	29	359	2,123	643	161	3,286	805	180	115
Kempsey (S)	13	160	996	405	19	1,580	157	179	38
Maclean (S)	18	87	1,182	422	131	1,822	343	55	70
Nambucca (S)	9	94	1,070	226	101	1,491	316	70	67
Taree, Greater (C)	16	184	1,237	237	63	1,721	331	353	63
Ullmarra (S)	7	38	489	365	40	932	227	142	26
Balance	5	18	287	54	28	387	118	41	16
<i>Mid-North Coast (SD)</i>	<i>128</i>	<i>1,291</i>	<i>9,962</i>	<i>3,433</i>	<i>759</i>	<i>15,445</i>	<i>3,169</i>	<i>1,200</i>	<i>532</i>
Glen Innes (M)	6	32	143	80	26	281	20	—	20
Inverell (S)									
Pts A & B	4	43	87	24	9	163	54	8	7
Moree Plains (S)	5	43	245	72	58	418	66	2	12
Narrabri (S)	8	38	173	36	47	294	59	2	21
Tamworth (C)	4	57	277	481	23	838	96	—	14
Tenterfield (S)	4	31	73	20	12	136	9	—	7
Balance	25	196	850	723	83	1,852	189	128	75
<i>Northern (SD)</i>	<i>56</i>	<i>440</i>	<i>1,848</i>	<i>1,436</i>	<i>258</i>	<i>3,982</i>	<i>493</i>	<i>140</i>	<i>156</i>

For footnotes see end of table.



## STATISTICAL LOCAL AREAS (a), NEW SOUTH WALES, DECEMBER QUARTER 1993

<i>Site nights occupied</i>				<i>Site occupancy rates (per cent)</i>				<i>Takings from accommodation (\$'000)</i>			
<i>Oct.</i>	<i>Nov.</i>	<i>Dec.</i>	<i>Dec. qtr</i>	<i>Oct.</i>	<i>Nov.</i>	<i>Dec.</i>	<i>Dec. qtr</i>	<i>Oct.</i>	<i>Nov.</i>	<i>Dec.</i>	<i>Dec. qtr</i>
9,757	9,379	10,261	29,397	41.4	41.1	43.6	42.0	74	55	68	196
9,216	8,935	9,233	27,384	65.3	65.5	65.5	65.4	86	91	105	282
38,408	36,814	38,893	114,115	65.9	65.2	66.7	65.9	403	367	477	1,247
8,414	8,111	8,809	25,334	27.9	27.8	29.2	28.3	41	52	37	130
9,065	8,783	9,088	26,936	75.4	75.5	75.6	75.5	128	120	124	372
107,686	102,513	112,685	322,884	69.3	68.2	72.6	70.1	876	757	1,220	2,853
59,939	59,042	65,204	184,185	68.8	70.0	74.8	71.2	940	877	1,026	2,844
<i>242,485</i>	<i>233,577</i>	<i>254,173</i>	<i>730,235</i>	<i>63.7</i>	<i>63.4</i>	<i>66.8</i>	<i>64.7</i>	<i>2,548</i>	<i>2,320</i>	<i>3,056</i>	<i>7,924</i>
3,864	4,226	4,726	12,816	47.8	54.0	58.4	53.4	43	44	52	139
76,243	70,214	84,424	230,881	59.9	57.0	66.4	61.2	668	526	921	2,115
48,026	48,471	51,170	147,667	65.6	68.4	69.9	68.0	454	451	606	1,511
4,725	4,325	4,017	13,067	57.1	54.0	48.5	53.2	49	48	41	138
67,424	64,439	73,469	205,332	69.0	68.1	75.1	70.8	559	544	805	1,907
2,548	1,969	2,082	6,599	60.0	47.9	49.0	52.4	17	13	17	48
1,803	1,772	1,765	5,340	34.6	35.2	33.9	34.5	15	14	14	43
12,387	10,633	13,153	36,173	36.8	32.6	39.1	36.2	105	89	126	321
<i>217,020</i>	<i>206,049</i>	<i>234,806</i>	<i>657,875</i>	<i>60.7</i>	<i>59.5</i>	<i>65.7</i>	<i>62.0</i>	<i>1,910</i>	<i>1,731</i>	<i>2,582</i>	<i>6,223</i>
37,792	36,516	41,142	115,450	63.1	63.0	68.7	65.0	281	290	407	978
11,183	11,008	12,940	35,131	42.2	42.9	48.8	44.7	92	90	114	296
222,372	213,044	239,389	674,805	68.6	67.9	73.8	70.1	1,585	1,349	1,997	4,930
40,716	38,883	43,391	122,990	66.8	65.9	71.2	68.0	470	539	476	1,485
<i>312,063</i>	<i>299,451</i>	<i>336,862</i>	<i>948,376</i>	<i>66.2</i>	<i>65.6</i>	<i>71.4</i>	<i>67.8</i>	<i>2,427</i>	<i>2,269</i>	<i>2,994</i>	<i>7,689</i>
28,594	25,841	33,504	87,939	57.2	53.4	67.0	59.3	289	232	378	898
22,419	20,680	37,719	80,818	43.6	41.6	73.4	53.0	294	263	535	1,093
10,087	9,572	9,511	29,170	74.1	72.7	69.9	72.2	90	80	81	251
8,461	7,582	11,326	27,369	36.0	33.3	48.2	39.2	56	44	87	187
84,064	79,114	89,659	252,837	71.2	69.3	75.8	72.1	778	696	1,073	2,547
2,716	2,384	2,389	7,489	33.3	30.2	29.3	31.0	21	19	20	61
<i>156,341</i>	<i>145,173</i>	<i>184,108</i>	<i>485,622</i>	<i>59.1</i>	<i>56.7</i>	<i>69.5</i>	<i>61.8</i>	<i>1,529</i>	<i>1,334</i>	<i>2,174</i>	<i>5,037</i>
11,349	11,053	12,948	35,350	43.2	43.5	49.3	45.4	70	60	81	211
45,175	40,804	57,696	143,675	43.1	40.3	58.8	47.2	431	353	566	1,351
44,221	40,452	49,806	134,479	43.4	41.0	48.9	44.5	631	513	830	1,974
18,453	16,302	22,523	57,278	37.7	34.4	46.0	39.4	156	162	220	538
19,670	17,177	24,100	60,947	34.8	31.4	42.7	36.4	230	202	327	759
18,112	15,391	23,954	57,457	39.2	34.4	51.8	41.9	209	168	355	732
24,620	23,703	30,695	79,018	46.1	45.9	57.5	49.9	170	142	248	560
14,238	13,510	16,987	44,735	49.3	48.3	58.8	52.2	139	134	221	494
6,645	6,312	6,528	19,485	55.4	54.4	54.4	54.7	56	40	42	138
<i>202,483</i>	<i>184,704</i>	<i>245,237</i>	<i>632,424</i>	<i>42.3</i>	<i>39.9</i>	<i>51.9</i>	<i>44.7</i>	<i>2,092</i>	<i>1,775</i>	<i>2,890</i>	<i>6,756</i>
1,647	1,201	1,357	4,205	18.9	14.2	15.6	16.3	24	17	19	60
2,910	2,365	2,642	7,917	57.6	48.4	52.3	52.8	31	23	27	81
3,782	3,287	3,308	10,377	29.2	26.2	25.5	27.0	54	48	48	149
3,313	3,572	3,991	10,876	36.4	40.5	43.8	40.2	47	50	60	157
4,979	4,395	5,005	14,379	19.2	17.5	19.3	18.7	60	45	56	161
957	838	848	2,643	22.7	20.5	20.1	21.1	16	13	13	43
14,811	13,858	14,381	43,050	25.8	24.9	25.0	25.3	109	106	106	320
<i>32,399</i>	<i>29,516</i>	<i>31,532</i>	<i>93,447</i>	<i>26.2</i>	<i>24.7</i>	<i>25.5</i>	<i>25.5</i>	<i>340</i>	<i>301</i>	<i>329</i>	<i>971</i>

TABLE 11 — CARAVAN PARKS: STATISTICAL DIVISIONS AND SELECTED

Statistical Divisions and Selected Statistical Local Areas	Establish- ments	Capacity				Cabins, flats etc.	Total	Sites occupied by long-term guests	Other sites perman- ently reserved	Employ- ment (persons)
		On-site vans	Other powered sites	Unpow- ered sites						
Bourke (S)	3	27	75	66	8	176	13	3	5	
Dubbo (C)	5	109	234	144	36	523	88	—	26	
Gilgandra (S)	4	17	98	22	20	157	19	—	10	
Mudgee (S)	6	69	303	417	81	870	121	314	18	
Narromine (S)	5	38	155	65	10	268	15	1	10	
Walgett (S)	5	34	140	140	23	337	55	11	10	
Wellington (S)	4	37	131	295	20	483	6	73	16	
Balance	13	71	460	1,253	20	1,804	64	—	36	
<i>North Western (SD)</i>	<i>45</i>	<i>402</i>	<i>1,596</i>	<i>2,402</i>	<i>218</i>	<i>4,618</i>	<i>381</i>	<i>402</i>	<i>131</i>	
Cowra (S)	4	49	265	270	31	615	19	84	24	
Forbes (S)	4	17	117	67	39	240	43	—	15	
Parkes (S)	6	55	143	23	28	249	70	1	12	
Balance	18	94	730	780	62	1,666	216	9	50	
<i>Central West (SD)</i>	<i>32</i>	<i>215</i>	<i>1,255</i>	<i>1,140</i>	<i>160</i>	<i>2,770</i>	<i>348</i>	<i>94</i>	<i>101</i>	
Bega Valley (S)	25	287	2,715	1,394	225	4,621	173	605	153	
Eurobodalla (S)	28	246	3,046	799	206	4,297	330	1,680	154	
Goulburn (C)	3	34	130	9	25	198	40	5	9	
Queanbeyan (C) & Yarrowlumla (S)	4	37	267	83	105	492	108	—	20	
Snowy River (S)	13	118	836	442	130	1,526	1	584	66	
Yass (S)	4	19	358	270	35	682	36	226	17	
Balance	10	48	285	276	19	628	29	151	20	
<i>South Eastern (SD)</i>	<i>87</i>	<i>789</i>	<i>7,637</i>	<i>3,273</i>	<i>745</i>	<i>12,444</i>	<i>717</i>	<i>3,251</i>	<i>439</i>	
Griffith (C)	3	14	103	100	26	243	25	—	5	
Murrumbidgee (S)	3	25	74	35	—	134	35	2	4	
Tumut (S)	5	20	282	92	38	432	2	34	13	
Wagga Wagga (C)	8	99	185	82	52	418	92	1	32	
Balance	17	80	518	221	65	884	47	3	38	
<i>Murrumbidgee (SD)</i>	<i>36</i>	<i>238</i>	<i>1,162</i>	<i>530</i>	<i>181</i>	<i>2,111</i>	<i>201</i>	<i>40</i>	<i>92</i>	
Albury (C)	5	80	224	95	44	443	104	3	16	
Berrigan (S)	7	24	483	35	29	571	43	243	26	
Corowa (S)	10	22	1,184	170	94	1,470	56	807	36	
Deniliquin (M)	6	37	451	183	28	699	44	227	15	
Hume (S)	3	3	241	121	125	490	8	60	50	
Murray (S)	10	11	1,160	202	84	1,457	79	918	41	
Wakool (S)	4	13	191	32	27	263	12	60	7	
Wentworth (S)	6	57	261	68	42	428	66	2	16	
Balance	11	36	293	130	23	482	33	14	24	
<i>Murray (SD)</i>	<i>62</i>	<i>283</i>	<i>4,488</i>	<i>1,036</i>	<i>496</i>	<i>6,303</i>	<i>445</i>	<i>2,334</i>	<i>231</i>	
<i>Far West (SD)</i>	<i>8</i>	<i>45</i>	<i>518</i>	<i>97</i>	<i>67</i>	<i>727</i>	<i>8</i>	<i>157</i>	<i>27</i>	
<i>New South Wales</i>										
Short-term parks	471	3,285	42,805	16,010	2,835	64,935	3,504	21,902	1,891	
Long-term parks	327	3,621	20,599	4,986	1,861	31,067	12,309	1,257	1,227	
Total	798	6,906	63,404	20,996	4,696	96,002	15,813	23,159	3,118	

(a) Statistical Local Areas are not shown separately in this table when data for them are confidential or nil. Data for these are aggregated and shown as the Balance of the particular Statistical Division.

## STATISTICAL LOCAL AREAS (a), NEW SOUTH WALES, DECEMBER QUARTER 1993—continued

<i>Site nights occupied</i>				<i>Site occupancy rates (per cent)</i>				<i>Takings from accommodation (\$'000)</i>			
<i>Oct.</i>	<i>Nov.</i>	<i>Dec.</i>	<i>Dec. qtr</i>	<i>Oct.</i>	<i>Nov.</i>	<i>Dec.</i>	<i>Dec. qtr</i>	<i>Oct.</i>	<i>Nov.</i>	<i>Dec.</i>	<i>Dec. qtr</i>
571	480	666	1,717	10.5	9.1	12.2	10.6	5	4	5	14
8,374	5,880	6,344	20,598	51.6	37.5	39.1	42.8	131	99	113	343
1,038	774	882	2,694	21.3	16.4	18.1	18.7	16	10	13	39
15,232	14,772	14,391	44,395	56.5	56.6	53.4	55.5	88	85	80	253
1,465	1,435	1,488	4,388	17.6	17.8	17.9	17.8	14	13	14	42
3,476	3,099	3,371	9,946	33.3	30.7	32.3	32.1	34	28	30	92
3,816	3,397	3,448	10,661	25.5	23.4	23.0	24.0	34	21	20	75
6,385	5,281	4,625	16,291	11.4	9.8	8.3	9.8	77	51	57	186
40,357	35,118	35,215	110,690	28.2	25.3	24.6	26.1	400	311	333	1,044
5,500	4,284	4,713	14,497	28.8	23.2	24.7	25.6	58	47	46	151
2,014	1,857	2,120	5,991	27.1	25.8	28.5	27.1	35	26	33	93
3,274	2,958	3,118	9,350	42.4	39.6	40.4	40.8	50	42	46	138
12,369	10,934	10,723	34,026	23.9	21.9	20.8	22.2	146	125	128	399
23,157	20,033	20,674	63,864	27.0	24.1	24.1	25.1	288	239	254	780
34,085	33,358	55,583	123,026	23.8	24.1	38.8	28.9	314	302	840	1,456
72,265	70,617	83,196	226,078	54.3	54.8	62.5	57.2	501	527	966	1,995
2,598	2,363	2,483	7,444	42.3	39.8	40.5	40.9	35	31	34	101
5,838	5,259	4,946	16,043	38.3	35.6	32.4	35.4	117	94	83	295
23,347	23,323	29,084	75,754	50.2	50.9	61.5	54.3	213	173	292	678
9,524	9,315	10,436	29,275	45.0	45.5	49.4	46.7	108	93	107	308
7,119	7,352	7,378	21,849	36.6	39.0	37.9	37.8	63	37	46	147
154,776	151,587	193,106	499,469	40.2	40.6	50.1	43.7	1,352	1,257	2,369	4,979
1,784	3,142	4,364	9,290	23.7	43.1	57.9	41.6	24	26	38	88
1,249	1,234	1,520	4,003	30.1	30.7	36.6	32.5	9	9	12	29
3,172	2,524	3,372	9,068	23.7	19.5	25.2	22.8	48	36	55	138
5,750	5,459	6,228	17,437	58.6	43.5	48.1	49.4	84	75	94	253
6,448	5,524	6,267	18,239	23.5	20.8	22.9	22.4	99	91	101	291
18,403	17,883	21,751	58,037	29.5	28.2	33.2	30.4	264	238	299	800
6,510	5,454	5,858	17,822	47.4	41.0	42.7	43.7	110	86	112	309
10,240	10,235	10,730	31,205	57.8	59.7	60.6	59.4	42	37	50	128
28,706	28,385	30,507	87,598	63.9	64.4	66.9	65.1	135	138	166	439
1,913	2,146	11,856	15,915	26.4	28.7	54.7	43.7	14	17	36	66
2,445	2,251	2,949	7,645	16.1	15.3	19.4	17.0	51	31	80	162
32,603	31,350	33,235	97,188	103.9	103.3	73.6	90.9	99	118	157	375
2,991	2,703	3,007	8,701	36.7	34.3	36.9	36.0	22	17	22	61
3,127	2,390	2,775	8,292	32.2	39.1	36.0	35.2	34	21	30	85
2,447	1,946	2,610	7,003	16.4	13.5	17.5	15.8	21	18	26	65
90,982	86,860	103,527	281,369	55.8	55.8	54.5	55.3	528	483	679	1,690
8,841	8,108	6,703	23,652	39.2	37.2	29.7	35.4	105	72	59	235
999,082	943,467	1,146,541	3,089,090	50.5	49.3	57.1	52.4	8,465	7,473	12,029	27,967
500,225	474,592	521,153	1,495,970	52.0	51.0	54.5	52.5	5,316	4,856	5,990	16,162
1,499,307	1,418,059	1,667,694	4,585,060	51.0	49.8	56.3	52.4	13,781	12,329	18,018	44,129

TABLE 12 — CARAVAN PARKS (a) BY STATISTICAL DIVISION, NEW SOUTH WALES

Particulars	Sydney (SD)			Hunter (SD)			Illawarra (SD)			Richmond - Tweed (SD)		
	Short-term	Long-term	Total	Short-term	Long-term	Total	Short-term	Long-term	Total	Short-term	Long-term	Total
<b>ESTABLISHMENTS, CAPACITY AND EMPLOYMENT</b>												
<i>December quarter 1992—</i>												
Establishments	35	57	92	39	51	90	73	19	92	25	44	69
Capacity												
On-site vans	328	906	1,234	253	549	802	456	205	661	160	327	487
Other powered sites	4,123	5,116	9,239	4,543	3,967	8,510	8,952	2,121	11,073	2,322	3,849	6,171
Unpowered sites	776	476	1,252	1,216	650	1,866	2,220	384	2,604	1,040	649	1,689
Cabins, flats, etc.	185	276	461	192	215	407	397	70	467	102	258	360
<i>Total capacity</i>	<i>5,412</i>	<i>6,774</i>	<i>12,186</i>	<i>6,204</i>	<i>5,381</i>	<i>11,585</i>	<i>12,025</i>	<i>2,780</i>	<i>14,805</i>	<i>3,624</i>	<i>5,083</i>	<i>8,707</i>
Sites occupied by long-term guests	253	3,391	3,644	328	2,184	2,512	256	1,005	1,261	237	2,481	2,718
Other sites permanently reserved	2,432	781	3,213	2,643	889	3,532	7,042	581	7,623	704	267	971
Employment (persons)	157	238	395	188	184	372	281	73	354	83	169	252
<i>December quarter 1993—</i>												
Establishments	44	49	93	53	36	89	82	11	93	27	42	69
Capacity												
On-site vans	367	890	1,257	315	448	763	502	171	673	132	378	510
Other powered sites	5,389	3,918	9,307	5,753	2,791	8,544	9,891	1,196	11,087	2,540	3,460	6,000
Unpowered sites	1,037	218	1,255	1,415	357	1,772	2,473	488	2,961	1,101	560	1,661
Cabins, flats, etc.	254	204	458	275	183	458	439	51	490	128	278	406
<i>Total capacity</i>	<i>7,047</i>	<i>5,230</i>	<i>12,277</i>	<i>7,758</i>	<i>3,779</i>	<i>11,537</i>	<i>13,305</i>	<i>1,906</i>	<i>15,211</i>	<i>3,901</i>	<i>4,676</i>	<i>8,577</i>
Sites occupied by long-term guests	461	3,022	3,483	660	1,801	2,461	565	777	1,342	300	2,465	2,765
Other sites permanently reserved	2,994	162	3,156	3,298	221	3,519	7,668	149	7,817	792	257	1,049
Employment (persons)	195	213	408	235	151	386	316	45	361	90	164	254
<b>SITE NIGHTS OCCUPIED ('000)</b>												
<i>December quarter 1992</i>	<i>308.9</i>	<i>425.0</i>	<i>733.9</i>	<i>365.3</i>	<i>317.0</i>	<i>682.3</i>	<i>752.9</i>	<i>154.3</i>	<i>907.2</i>	<i>168.4</i>	<i>290.9</i>	<i>459.3</i>
<i>1993—</i>												
October	132.3	110.2	242.5	148.6	68.4	217.0	281.8	30.3	312.1	54.7	101.6	156.3
November	127.1	106.5	233.6	138.1	68.0	206.0	270.3	29.2	299.5	51.2	94.0	145.2
December	139.4	114.7	254.2	164.2	70.6	234.8	305.4	31.5	336.9	79.2	104.9	184.1
<i>December quarter 1993</i>	<i>398.8</i>	<i>331.4</i>	<i>730.2</i>	<i>450.9</i>	<i>207.0</i>	<i>657.9</i>	<i>857.4</i>	<i>90.9</i>	<i>948.4</i>	<i>185.1</i>	<i>300.6</i>	<i>485.6</i>
<b>SITE OCCUPANCY RATES (per cent)</b>												
<i>December quarter 1992</i>	<i>62.0</i>	<i>68.2</i>	<i>65.5</i>	<i>64.0</i>	<i>64.0</i>	<i>64.0</i>	<i>68.1</i>	<i>60.3</i>	<i>66.6</i>	<i>51.1</i>	<i>62.2</i>	<i>57.6</i>
<i>1993—</i>												
October	60.6	68.0	63.7	61.8	58.4	60.7	68.3	51.3	66.2	45.3	70.7	59.1
November	60.1	67.9	63.4	59.3	60.0	59.5	67.7	51.0	65.6	43.7	67.6	56.7
December	63.8	70.8	66.8	68.3	60.3	65.7	74.0	53.3	71.4	65.5	72.9	69.5
<i>December quarter 1993</i>	<i>61.5</i>	<i>68.9</i>	<i>64.7</i>	<i>63.2</i>	<i>59.5</i>	<i>62.0</i>	<i>70.0</i>	<i>51.9</i>	<i>67.8</i>	<i>51.6</i>	<i>70.4</i>	<i>61.8</i>
<b>TAKINGS FROM ACCOMMODATION (\$'000)</b>												
<i>December quarter 1992</i>	<i>3,294</i>	<i>4,592</i>	<i>7,886</i>	<i>3,107</i>	<i>2,869</i>	<i>5,976</i>	<i>5,649</i>	<i>1,256</i>	<i>6,905</i>	<i>1,888</i>	<i>2,779</i>	<i>4,667</i>
<i>1993—</i>												
October	1,311	1,237	2,548	1,214	696	1,910	2,136	290	2,427	600	929	1,529
November	1,130	1,190	2,320	1,053	678	1,731	1,977	292	2,269	488	846	1,334
December	1,732	1,324	3,056	1,803	778	2,582	2,663	331	2,994	1,105	1,069	2,174
<i>December quarter 1993</i>	<i>4,173</i>	<i>3,751</i>	<i>7,924</i>	<i>4,070</i>	<i>2,153</i>	<i>6,223</i>	<i>6,776</i>	<i>913</i>	<i>7,689</i>	<i>2,193</i>	<i>2,844</i>	<i>5,037</i>

For footnotes see end of table.

TABLE 12 — CARAVAN PARKS (a) BY STATISTICAL DIVISION, NEW SOUTH WALES—continued

Particulars	Mid - North Coast (SD)			Northern (SD)			North Western (SD)			Central West (SD)		
	Short-term	Long-term	Total	Short-term	Long-term	Total	Short-term	Long-term	Total	Short-term	Long-term	Total
<b>ESTABLISHMENTS, CAPACITY AND EMPLOYMENT</b>												
<i>December quarter 1992—</i>												
Establishments	41	87	128	24	31	55	20	24	44	15	19	34
Capacity												
On-site vans	372	907	1,279	142	303	445	158	197	355	63	159	222
Other powered sites	4,367	5,685	10,052	815	994	1,809	625	855	1,480	561	715	1,276
Unpowered sites	1,823	1,609	3,432	759	623	1,382	1,896	476	2,372	877	289	1,166
Cabins, flats, etc.	306	448	754	90	140	230	94	105	199	49	87	136
<i>Total capacity</i>	<i>6,868</i>	<i>8,649</i>	<i>15,517</i>	<i>1,806</i>	<i>2,060</i>	<i>3,866</i>	<i>2,773</i>	<i>1,633</i>	<i>4,406</i>	<i>1,550</i>	<i>1,250</i>	<i>2,800</i>
Sites occupied by long-term guests	509	2,709	3,218	65	451	516	55	345	400	26	315	341
Other sites permanently reserved	650	476	1,126	120	12	132	365	4	369	84	8	92
Employment (persons)	183	323	506	68	82	150	67	66	133	55	54	109
<i>December quarter 1993—</i>												
Establishments	53	75	128	25	31	56	23	22	45	12	20	32
Capacity												
On-site vans	527	764	1,291	140	300	440	189	213	402	46	169	215
Other powered sites	5,053	4,909	9,962	948	900	1,848	760	836	1,596	440	815	1,255
Unpowered sites	2,164	1,269	3,433	808	628	1,436	2,035	367	2,402	821	319	1,140
Cabins, flats, etc.	241	518	759	125	133	258	108	110	218	39	121	160
<i>Total capacity</i>	<i>7,985</i>	<i>7,460</i>	<i>15,445</i>	<i>2,021</i>	<i>1,961</i>	<i>3,982</i>	<i>3,092</i>	<i>1,526</i>	<i>4,618</i>	<i>1,346</i>	<i>1,424</i>	<i>2,770</i>
Sites occupied by long-term guests	668	2,501	3,169	90	403	493	64	317	381	18	330	348
Other sites permanently reserved	958	242	1,200	126	14	140	398	4	402	86	8	94
Employment (persons)	195	337	532	76	80	156	78	53	131	45	56	101
<b>SITE NIGHTS OCCUPIED ('000)</b>												
<i>December quarter 1992</i>	<i>224.2</i>	<i>370.6</i>	<i>594.8</i>	<i>38.7</i>	<i>57.3</i>	<i>96.1</i>	<i>64.7</i>	<i>44.2</i>	<i>108.9</i>	<i>21.1</i>	<i>43.6</i>	<i>64.7</i>
<i>1993—</i>												
October	96.8	105.7	202.5	15.6	16.8	32.4	26.0	14.3	40.4	6.7	16.5	23.2
November	86.1	98.6	184.7	13.8	15.7	29.5	21.8	13.3	35.1	5.6	14.5	20.0
December	128.4	116.8	245.2	14.6	16.9	31.5	21.8	13.4	35.2	6.2	14.4	20.7
<i>December quarter 1993</i>	<i>311.3</i>	<i>321.1</i>	<i>632.4</i>	<i>44.0</i>	<i>49.4</i>	<i>93.4</i>	<i>69.6</i>	<i>41.1</i>	<i>110.7</i>	<i>18.5</i>	<i>45.4</i>	<i>63.9</i>
<b>SITE OCCUPANCY RATES (per cent)</b>												
<i>December quarter 1992</i>	<i>35.5</i>	<i>47.0</i>	<i>41.9</i>	<i>23.3</i>	<i>30.3</i>	<i>27.0</i>	<i>25.3</i>	<i>29.4</i>	<i>26.9</i>	<i>14.8</i>	<i>37.9</i>	<i>25.1</i>
<i>1993—</i>												
October	39.1	45.7	42.3	25.0	27.6	26.2	27.2	30.3	28.2	16.1	37.3	27.0
November	36.0	44.0	39.9	22.7	26.7	24.7	23.5	29.1	25.3	13.7	33.9	24.1
December	51.9	52.0	51.9	23.3	27.8	25.5	22.8	28.3	24.6	15.0	32.7	24.1
<i>December quarter 1993</i>	<i>42.4</i>	<i>47.2</i>	<i>44.7</i>	<i>23.7</i>	<i>27.4</i>	<i>25.5</i>	<i>24.5</i>	<i>29.2</i>	<i>26.1</i>	<i>14.9</i>	<i>34.6</i>	<i>25.1</i>
<b>TAKINGS FROM ACCOMMODATION (\$'000)</b>												
<i>December quarter 1992</i>	<i>2,726</i>	<i>3,655</i>	<i>6,381</i>	<i>356</i>	<i>562</i>	<i>917</i>	<i>513</i>	<i>466</i>	<i>979</i>	<i>234</i>	<i>475</i>	<i>709</i>
<i>1993—</i>												
October	944	1,147	2,092	155	185	340	225	175	400	76	212	288
November	791	983	1,775	139	163	301	165	146	311	58	181	239
December	1,403	1,487	2,890	144	186	329	179	154	333	67	187	254
<i>December quarter 1993</i>	<i>3,139</i>	<i>3,618</i>	<i>6,756</i>	<i>438</i>	<i>533</i>	<i>971</i>	<i>570</i>	<i>474</i>	<i>1,044</i>	<i>200</i>	<i>580</i>	<i>780</i>

For footnotes see end of table.

TABLE 12 — CARAVAN PARKS (a) BY STATISTICAL DIVISION, NEW SOUTH WALES—continued

Particulars	South Eastern (SD)(b)			Murrumbidgee and Far West (SDs)			Murray (SD)			New South Wales (b)		
	Short-term	Long-term	Total	Short-term	Long-term	Total	Short-term	Long-term	Total	Short-term	Long-term	Total
	<b>ESTABLISHMENTS, CAPACITY AND EMPLOYMENT</b>											
<i>December quarter 1992—</i>												
Establishments	63	29	92	31	13	44	46	16	62	412	390	802
Capacity												
On-site vans	795	195	990	187	93	280	183	98	281	3,097	3,939	7,036
Other powered sites	5,469	2,443	7,912	1,254	373	1,627	3,702	674	4,376	36,733	26,792	63,525
Unpowered sites	2,780	1,012	3,792	441	185	626	709	209	918	14,537	6,562	21,099
Cabins, flats, etc.	543	188	731	175	51	226	408	87	495	2,541	1,925	4,466
<i>Total capacity</i>	<i>9,587</i>	<i>3,838</i>	<i>13,425</i>	<i>2,057</i>	<i>702</i>	<i>2,759</i>	<i>5,002</i>	<i>1,068</i>	<i>6,070</i>	<i>56,908</i>	<i>39,218</i>	<i>96,126</i>
Sites occupied by long-term guests	209	815	1,024	55	163	218	169	251	420	2,162	14,110	16,272
Other sites permanently reserved	2,273	776	3,049	104	2	106	1,560	161	1,721	17,977	3,957	21,934
Employment (persons)	363	111	474	82	36	118	150	47	197	1,677	1,383	3,060
<i>December quarter 1993—</i>												
Establishments	68	19	87	33	11	44	51	11	62	471	327	798
Capacity												
On-site vans	676	113	789	201	82	283	190	93	283	3,285	3,621	6,906
Other powered sites	6,461	1,176	7,637	1,427	253	1,680	4,143	345	4,488	42,805	20,599	63,404
Unpowered sites	2,790	483	3,273	466	161	627	900	136	1,036	16,010	4,986	20,996
Cabins, flats, etc.	576	169	745	211	37	248	439	57	496	2,835	1,861	4,696
<i>Total capacity</i>	<i>10,503</i>	<i>1,941</i>	<i>12,444</i>	<i>2,305</i>	<i>533</i>	<i>2,838</i>	<i>5,672</i>	<i>631</i>	<i>6,303</i>	<i>64,935</i>	<i>31,067</i>	<i>96,002</i>
Sites occupied by long-term guests	344	373	717	61	148	209	273	172	445	3,504	12,309	15,813
Other sites permanently reserved	3,064	187	3,251	195	2	197	2,323	11	2,334	21,902	1,257	23,159
Employment (persons)	372	67	439	89	30	119	200	31	231	1,891	1,227	3,118
<b>SITE NIGHTS OCCUPIED ('000)</b>												
<i>December quarter 1992</i>	<i>347.5</i>	<i>166.2</i>	<i>513.7</i>	<i>46.9</i>	<i>26.3</i>	<i>73.2</i>	<i>197.6</i>	<i>44.8</i>	<i>242.4</i>	<i>2,536.3</i>	<i>1,940.2</i>	<i>4,476.5</i>
<i>1993—</i>												
October	133.4	21.3	154.8	20.4	6.8	27.2	82.6	8.4	91.0	999.1	500.2	1,499.3
November	131.1	20.5	151.6	19.1	6.9	26.0	79.5	7.3	86.9	943.5	474.6	1,418.1
December	171.1	22.0	193.1	20.5	7.9	28.5	95.7	7.8	103.5	1,146.5	521.2	1,667.7
<i>December quarter 1993</i>	<i>435.6</i>	<i>63.8</i>	<i>499.5</i>	<i>60.0</i>	<i>21.7</i>	<i>81.7</i>	<i>257.8</i>	<i>23.6</i>	<i>281.4</i>	<i>3,089.1</i>	<i>1,496.0</i>	<i>4,585.1</i>
<b>SITE OCCUPANCY RATES (per cent)</b>												
<i>December quarter 1992</i>	<i>39.4</i>	<i>47.1</i>	<i>41.6</i>	<i>24.8</i>	<i>41.8</i>	<i>29.0</i>	<i>49.5</i>	<i>46.3</i>	<i>48.9</i>	<i>49.0</i>	<i>53.9</i>	<i>51.1</i>
<i>1993—</i>												
October	41.1	35.5	40.2	29.9	41.1	32.1	57.6	43.0	55.8	50.5	52.0	51.0
November	41.6	35.2	40.6	27.6	43.3	30.5	58.2	38.8	55.8	49.3	51.0	49.8
December	52.6	36.5	50.1	28.7	48.0	32.3	56.2	40.1	54.5	57.1	54.5	56.3
<i>December quarter 1993</i>	<i>45.1</i>	<i>35.8</i>	<i>43.7</i>	<i>28.7</i>	<i>44.2</i>	<i>31.7</i>	<i>57.2</i>	<i>40.6</i>	<i>55.3</i>	<i>52.4</i>	<i>52.5</i>	<i>52.4</i>
<b>TAKINGS FROM ACCOMMODATION (\$'000)</b>												
<i>December quarter 1992</i>	<i>4,019</i>	<i>1,459</i>	<i>5,478</i>	<i>667</i>	<i>275</i>	<i>942</i>	<i>1,324</i>	<i>415</i>	<i>1,739</i>	<i>23,777</i>	<i>18,804</i>	<i>42,580</i>
<i>1993—</i>												
October	1,101	250	1,352	282	87	368	420	108	528	8,465	5,316	13,781
November	1,032	226	1,257	243	66	309	397	86	483	7,473	4,856	12,329
December	2,084	286	2,369	281	77	358	567	112	679	12,029	5,990	18,018
<i>December quarter 1993</i>	<i>4,217</i>	<i>762</i>	<i>4,979</i>	<i>806</i>	<i>229</i>	<i>1,035</i>	<i>1,385</i>	<i>305</i>	<i>1,690</i>	<i>27,967</i>	<i>16,162</i>	<i>44,129</i>

(a) A review of the occupancy of individual caravan parks resulted in reclassification in September quarter 1993 of a net 57 caravan parks from predominantly long-term to predominantly short-term. (b) Includes ACT establishments before March quarter 1993. From March quarter 1993, data for these establishments are published in *Tourist Accommodation, Australian Capital Territory* (8635.8).

TABLE 13 — VISITOR HOSTELS BY STATISTICAL DIVISION, NEW SOUTH WALES

Particulars	Sydney (SD)	Hunter (SD)	Illawarra (SD)	Richmond- Tweed (SD)	Mid - North Coast (SD)	South Eastern (SD) (a)	Balance of State	New South Wales (a)
ESTABLISHMENTS, CAPACITY AND EMPLOYMENT								
<i>December quarter 1992—</i>								
Establishments	40	6	3	9	7	5	7	77
Bed spaces	3,054	166	121	588	291	660	257	5,137
Employment (persons)	145	24	4	33	12	42	17	277
<i>December quarter 1993—</i>								
Establishments	37	7	4	10	7	5	8	78
Bed spaces	2,862	256	124	616	283	634	251	5,026
Employment (persons)	146	28	8	36	13	49	20	300
GUEST NIGHTS								
<i>December quarter 1992</i>	<i>197,205</i>	<i>2,262</i>	<i>1,868</i>	<i>30,421</i>	<i>8,743</i>	<i>17,915</i>	<i>3,653</i>	<i>262,067</i>
<i>1993—</i>								
October	56,755	1,019	633	8,912	2,599	6,480	1,993	78,391
November	62,464	682	527	9,809	2,462	5,794	1,314	83,052
December	71,903	1,642	946	12,907	3,570	4,810	1,526	97,304
<i>December quarter 1993</i>	<i>191,122</i>	<i>3,343</i>	<i>2,106</i>	<i>31,628</i>	<i>8,631</i>	<i>17,084</i>	<i>4,833</i>	<i>258,747</i>
BED OCCUPANCY RATES (per cent)								
<i>December quarter 1992</i>	<i>70.2</i>	<i>14.8</i>	<i>16.8</i>	<i>56.2</i>	<i>32.7</i>	<i>29.5</i>	<i>15.5</i>	<i>55.5</i>
<i>1993—</i>								
October	64.0	18.1	16.5	46.7	29.6	33.0	25.6	51.1
November	72.8	12.5	14.2	53.1	29.0	30.5	17.5	55.9
December	81.0	20.7	24.6	67.6	40.7	24.5	19.6	62.5
<i>December quarter 1993</i>	<i>72.6</i>	<i>17.6</i>	<i>18.5</i>	<i>55.8</i>	<i>33.2</i>	<i>29.3</i>	<i>20.9</i>	<i>56.5</i>
GUEST ARRIVALS								
<i>December quarter 1992</i>	<i>39,851</i>	<i>1,381</i>	<i>1,214</i>	<i>14,216</i>	<i>5,333</i>	<i>7,734</i>	<i>1,902</i>	<i>71,631</i>
<i>1993—</i>								
October	13,230	636	353	3,775	1,470	2,959	897	23,320
November	14,683	414	323	3,065	1,402	2,782	486	23,155
December	16,532	818	565	4,039	2,217	1,995	630	26,796
<i>December quarter 1993</i>	<i>44,445</i>	<i>1,868</i>	<i>1,241</i>	<i>10,879</i>	<i>5,089</i>	<i>7,736</i>	<i>2,013</i>	<i>73,271</i>
AVERAGE LENGTH OF STAY (days)								
<i>December quarter 1992</i>	<i>4.9</i>	<i>1.6</i>	<i>1.5</i>	<i>2.1</i>	<i>1.6</i>	<i>2.3</i>	<i>1.9</i>	<i>3.7</i>
<i>1993—</i>								
October	4.3	1.6	1.8	2.4	1.8	2.2	2.2	3.4
November	4.3	1.6	1.6	3.2	1.8	2.1	2.7	3.6
December	4.3	2.0	1.7	3.2	1.6	2.4	2.4	3.6
<i>December quarter 1993</i>	<i>4.3</i>	<i>1.8</i>	<i>1.7</i>	<i>2.9</i>	<i>1.7</i>	<i>2.2</i>	<i>2.4</i>	<i>3.5</i>
TAKINGS FROM ACCOMMODATION (\$'000)								
<i>December quarter 1992</i>	<i>2,417</i>	<i>22</i>	<i>21</i>	<i>370</i>	<i>95</i>	<i>230</i>	<i>42</i>	<i>3,197</i>
<i>1993—</i>								
October	747	14	7	110	28	90	23	1,020
November	832	10	6	125	27	87	15	1,101
December	954	21	12	172	40	68	17	1,284
<i>December quarter 1993</i>	<i>2,533</i>	<i>45</i>	<i>25</i>	<i>407</i>	<i>96</i>	<i>245</i>	<i>55</i>	<i>3,406</i>

(a) Includes Australian Capital Territory establishments.

## EXPLANATORY NOTES

- \*\*\*\*\*
- INTRODUCTION**
- 1 This publication contains data for New South Wales from a quarterly survey of tourist accommodation establishments. The period covered by the latest survey is the 3 months ended 31 December 1993.
- SCOPE**
- 2 Tourist accommodation establishments currently included in the survey comprise two groups:
- Establishments which provide predominantly short-term accommodation (i.e. for periods of less than 2 months) to the general public. These include:
 

*Hotels, motels and guest houses, with facilities* being hotels licensed to operate a public bar and motels, private hotels and guest houses all of which provide a bath (or shower) and toilet in most guest rooms and have breakfast available for guests.

NOTE: From December quarter 1993, hotel, motel and guest house establishments with fewer than five rooms have been formally excluded from the scope of this statistical collection. This change in scope resulted in the exclusion of 20 establishments which in the September quarter 1993 Survey aggregates for New South Wales represented 1.1 per cent of hotel, motel and guest house establishments but accounted for only 0.1 per cent of accommodation capacity, occupancy and takings.

*Holiday flats, units and houses* (excluding establishments predominantly operated on a time share basis) which are operated by owners or managers who have sole letting rights to at least five flats, units or houses or by real estate agents for short-term letting. They are mainly self-contained in terms of cooking, bath (or shower) and toilet facilities and do not have breakfast available for guests. Data for holiday flats, units and houses include short-term owner occupation as well as paying guest occupation.

*Visitor hostels* which provide accommodation to visitors on a bed basis (rather than by the room). This category does not include establishments providing charity type accommodation (e.g. Salvation Army hostels) nor hotels, motels and guest houses without in-room facilities which provide accommodation on a per room basis.
  - *Caravan parks* which provide either predominantly short-term (i.e. for periods of less than 2 months) or predominantly long-term (i.e. for periods of 2 months or more) accommodation to the general public and which provide powered sites for caravans and toilet, shower and laundry facilities for guests.
- 3 Data collected and published for each type of establishment (other than holiday flats, units and houses) include both long-term and short-term guests at these establishments.
- 4 Establishments which provide more than one type of accommodation (e.g. a motel with attached caravan park) are treated as two or more separate establishments. However, self-contained units, flats, cabins, etc. attached to hotels, motels or to caravan parks are included in the capacity for those establishments and not treated as separate holiday flat, unit or house establishments.
- DEFINITIONS**
- 5 *Number of establishments.* For hotels, motels and guest houses, caravan parks and visitor hostels, the number of establishments within the scope of the survey which operated for any part of the survey period, or which closed temporarily for the quarter for seasonal reasons.
- 6 *Number of letting entities.* For holiday flats, units and houses, the number of owners, managers or real estate agents within the scope of the survey who operated for any part of the survey period.
- 7 Capacity in terms of *Guest rooms, Bed spaces, Holiday units* or *Caravan park sites, etc.* is the maximum number available to accommodate paying guests during the survey period. Capacity closed temporarily for seasonal reasons is included.
- 8 *Bed spaces.* Three-quarter beds are counted as one bed space; double beds as two bed spaces. Cots are excluded.
- 9 *Total caravan park capacity* comprises *On-site vans, Other powered sites, Unpowered sites* and *Cabins, etc.*



## EXPLANATORY NOTES—continued

## DEFINITIONS—continued

**10 Room nights available.** The number of guest rooms available multiplied by the number of days for which they were available during the survey period. Includes operating periods only for establishments closing (other than for seasonal reasons) or opening during the survey period.

**11 Occupancy in terms of Room nights, Unit nights or Site nights occupied** refers to the total number of nights each guest room, holiday unit or caravan park site, etc. was occupied during the survey period.

NOTE: From September quarter 1992, caravan park sites, etc. permanently reserved for 2 months or more at the end of the survey period but only casually occupied by their tenants have been recorded continuously as *Site nights occupied* irrespective of whether the tenants of individual sites were in residence on any particular night. (See also paragraph 14 below). Previously, usage of these sites was recorded as *Site nights occupied* only when their tenants were in the park. Total site occupancy rates from September quarter 1992 are therefore not comparable with those from previous quarters.

**12 Occupancy in terms of Guest nights** refers to the total number of nights each paying guest stayed during the survey period.

**13 Sites occupied by long-term guests.** The total number of sites, etc. occupied at the end of the survey period by guests who have stayed continuously for 2 months or more.

**14 Other sites permanently reserved.** The total number of powered and unpowered sites, on-site vans and cabins, etc. continuously let for 2 months or more by the end of the survey period to tenants who occupy the sites only on a casual or sporadic basis. Separate data for this item are available only from September quarter 1992.

**15 Occupancy rates** represent occupancy expressed as a percentage of total capacity available during the survey period - e.g.

$$\text{Room occupancy rate (\%)} \text{ for the period} = \frac{\text{Room nights occupied}}{(\text{Guest rooms}) \times (\text{No. of days in the period})} \times 100$$

providing that, for establishments closing (other than for seasonal reasons) or opening during the period, the denominator of the above expression includes only operating periods.

**16 Guest arrivals.** The total number of paying guests counted only on the first night they stayed at the accommodation establishment.

**17 Unit lettings.** The total number of times a holiday flat, unit or house was occupied by a new tenant, counted only on the first night it was occupied by the new tenant.

**18 Average length of stay** is expressed in number of days and is calculated:

- for hotels, motels and guest houses and for visitor hostels, by dividing *Guest nights* by *Guest arrivals* and
- for holiday flats, units and houses, by dividing *Unit nights occupied* by *Unit lettings*.

**19 Takings from accommodation.** Revenue received from the provision of accommodation. Takings from meals are excluded. Takings from accommodation for each month generally represent the takings received during that month. Where payments are received in advance of, or after, the provision of accommodation to guests, the monthly figure for takings from accommodation may not necessarily bear a direct relationship to the number of guests accommodated during the month. Rental and storage fees paid to caravan parks for the keeping of private vans in parks are included in the takings of the month they are received.

**20 Star grading.** The grading of hotels and motels with facilities based on the classification system used by members of the Australian Automobile Association (AAA). The gradings are allocated according to a points system based on the amenities and facilities available to guests. Details of the grading scheme are contained in the RACV-RAASA members' publication *Accommodation Australia*, or the individual tour guides produced by members of the AAA. For the purpose of classifying establishments to a star

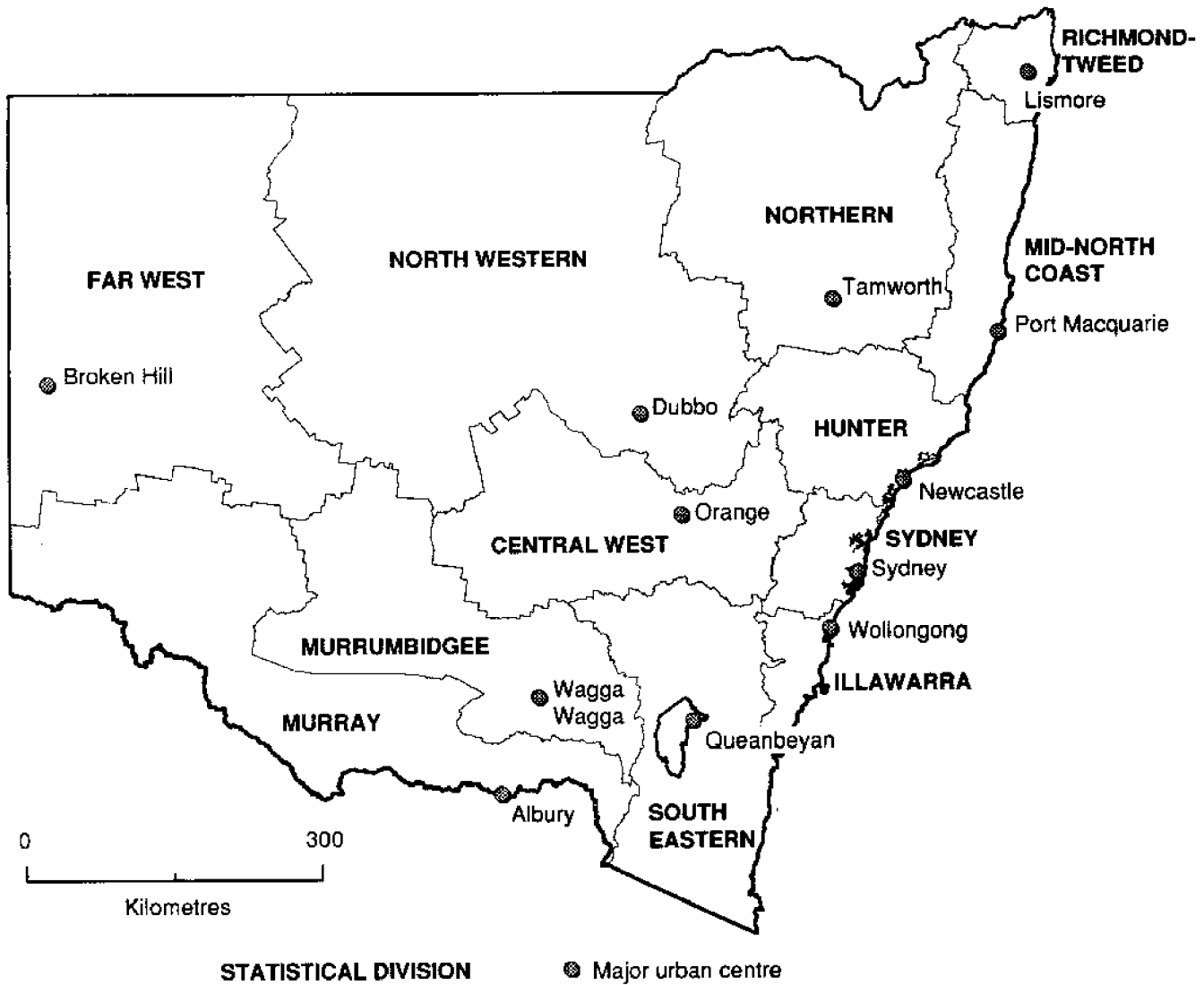
EXPLANATORY NOTES—*continued*

\*\*\*\*\*

DEFINITIONS — <i>continued</i>	<p>grading in this publication, 'half' star gradings are ignored (e.g. a two and a half star grading has been shown as two star).</p> <p><b>21</b> <i>Employment.</i> The number of persons working at accommodation establishments at the end of the survey period (including working proprietors and those working on other than accommodation activities).</p>
AUSTRALIAN STANDARD GEOGRAPHICAL CLASSIFICATION	<p><b>22.</b> Statistics presented in this publication have been classified according to the Australian Standard Geographical Classification (ASGC), Edition 2.3. This classification incorporates a number of hierarchic structures of geographic areas. The appropriate spatial units of the main structure of the ASGC used in this publication are defined as follows.</p> <p><i>Statistical Local Areas (SLAs)</i> are in most cases either identical with, or have been aggregated to, the previously published whole or part legal Local Government Areas (LGAs) as defined under the (State) <i>Local Government Act 1919</i> and comprising cities (C), municipalities (M) and shires (S). In other cases, they are identical to each previously published unincorporated area. In aggregate, SLAs cover the whole of the State without gaps or overlaps. In some cases, legal LGAs overlap Statistical Subdivision boundaries and therefore comprise two SLAs (Part A and Part B) or three SLAs in the case of Cabonne (S) (Part A, Part B and Part C).</p> <p><i>Statistical Subdivisions (SSDs).</i> These consist of one or more SLAs and form the intermediate size spatial unit for the presentation of regional data.</p> <p><i>Statistical Divisions (SDs).</i> These consist of one or more SSDs. The divisions are designed to be relatively homogeneous regions characterised by identifiable social and economic units within the region, under the unifying influence of one or more major towns or cities. For more detailed information, refer to the ASGC (1216.0).</p>
UNPUBLISHED STATISTICS	<p><b>23</b> The ABS may make available on request certain unpublished tourist accommodation statistics. In particular, small geographic area and other tabulations are available for various accommodation types in a time series format. A charge may be made for this information.</p>
RELATED PUBLICATIONS	<p><b>24</b> Publications for Australia, and each State and Territory, are released by the respective offices of the ABS. Tourist accommodation statistics for past quarters are available on request.</p> <p><b>25</b> Other ABS publications which may be of interest include:</p> <p style="padding-left: 20px;"><i>Directory of Tourism Statistics, 1991</i> (1130.0) (irregular)</p> <p style="padding-left: 20px;"><i>Overseas Arrivals and Departures, Australia</i> (3401.0) (monthly)</p> <p style="padding-left: 20px;"><i>Tourist Accommodation, Australia</i> (8635.0) (quarterly)</p> <p><b>26</b> Current publications produced by the ABS are listed in the <i>Catalogue of Publications and Products</i> (1101.0). The ABS also issues the <i>Publications Advice</i> (1105.0) on Tuesdays and Fridays which lists publications to be released in the next few days. Both the <i>Catalogue and Publications Advice</i> are available from any ABS office.</p>
SYMBOLS AND OTHER USAGES	<p>n.a. not available</p> <p>n.p. not available for publication but included in totals where applicable</p> <p>r figure or series revised since previous issue</p> <p>.. not applicable</p> <p>— nil or rounded to zero</p> <p>C City</p> <p>M Municipality</p> <p>S Shire</p> <p>SD Statistical Division</p> <p><b>27</b> Where figures have been rounded, discrepancies may occur between totals and the sums of the component items.</p>

**GREG BRAY**  
Deputy Commonwealth Statistician

**REFERENCE MAP  
STATISTICAL DIVISIONS, NEW SOUTH WALES**





## For more information ...

The ABS publishes a wide range of statistics and other information on Australia's economic and social conditions. Details of what is available in various publications and other products can be found in the *ABS Catalogue of Publications and Products* available at all ABS Offices (see below for contact details).

### Information Consultancy Service

Information tailored to special needs of clients can be obtained from the Information Consultancy Service available at ABS Offices (see Information Inquiries below for contact details).

### National Dial-a-Statistic Line

0055 86 400

This number gives you 24 hour access, 365 days a year for a range of statistics.

### Electronic Data Services

A wide range of ABS data are available on electronic media. Selections of most frequently requested statistics are available, updated daily, on DISCOVERY (Key \*656#). The ABS PC TELESTATS service delivers major economic indicator main features ready to download into personal computers on the day of release. The PC AUSSTATS service enables on-line access to a data base of thousands of up-to-date time series. Selected datasets are also available on diskette or CD-ROM. For more details on electronic data services available, contact Information Services in any of the ABS Offices (see Information Inquiries below for contact details).

### Bookshops and Subscriptions

There are over 500 titles of various publications available from ABS bookshops in all ABS Offices (see below Bookshop Sales for contact details). The ABS also provides a subscription service through which nominated publications are provided by mail on a regular basis at no additional cost (telephone Publications Subscription Service toll free on 008 02 0608 Australia wide).

## Sales and Inquiries

Regional Offices	Information Inquiries	Bookshop Sales
SYDNEY	(02) 268 4611	(02) 268 4620
MELBOURNE	(03) 615 7000	(03) 615 7829
BRISBANE	(07) 222 6351	(07) 222 6350
PERTH	(09) 323 5140	(09) 323 5307
ADELAIDE	(08) 237 7100	(08) 237 7582
HOBART	(002) 205 800	(002) 205 800
CANBERRA	(06) 207 0326	(06) 207 0326
DARWIN	(089) 432 111	(089) 432 111
<b>National Office</b>		
ACT	(06) 252 6007	(06) 008 020 608



Information Services, ABS, GPO Box 796, Sydney NSW 2001  
or any ABS office

